

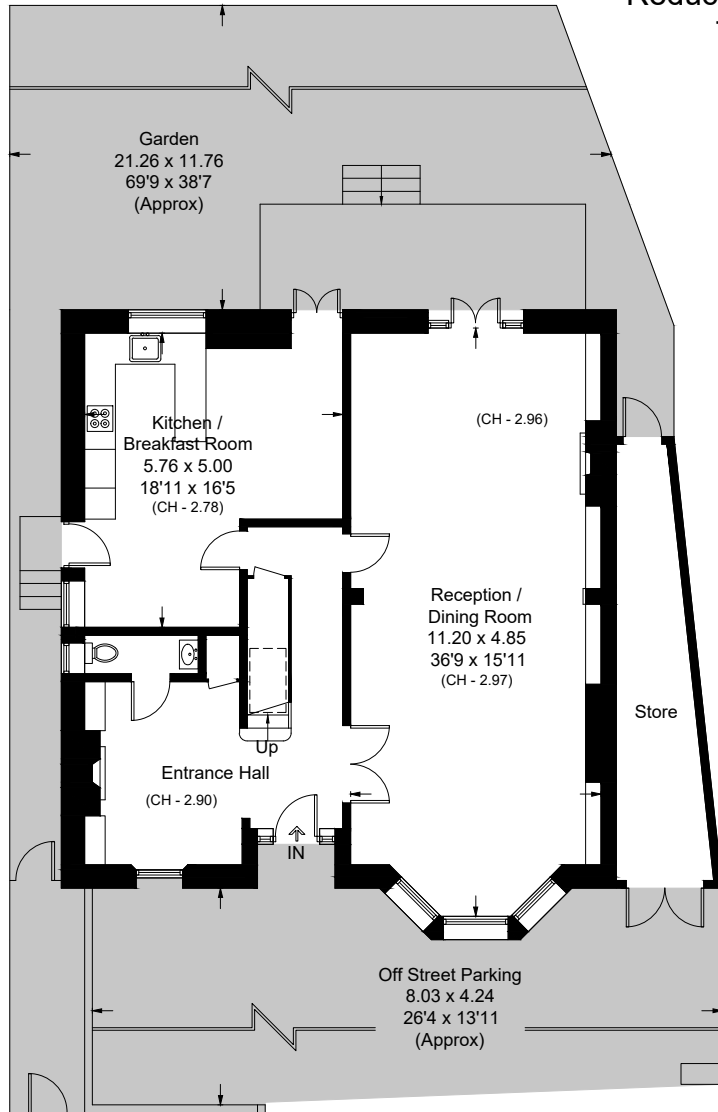
# Tanza Road, NW3

Approximate Area = 270.4 sq m / 2910 sq ft  
(Excluding Reduced Headroom / Void)

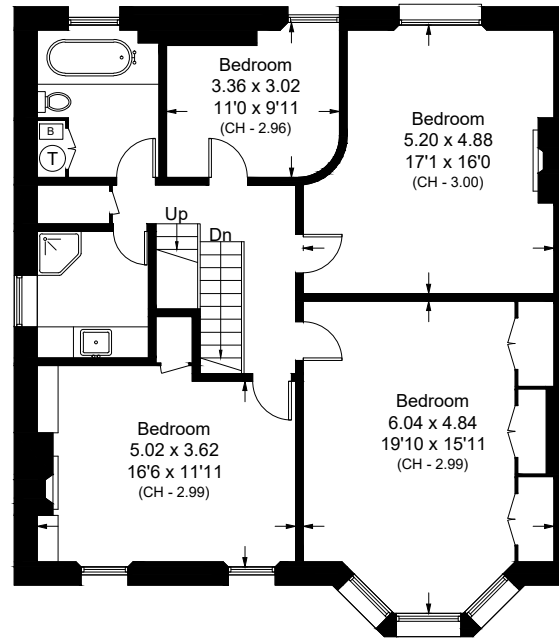
Store = 12.1 sq m / 130 sq ft

Reduced Headroom = 10.3 sq m / 111 sq ft

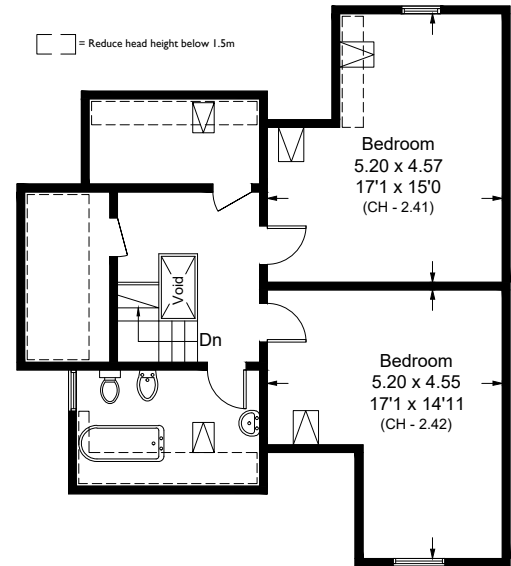
Total = 292.8 sq m / 3151 sq ft



**Ground Floor**



**First Floor**



**Second Floor**

Surveyed and drawn in accordance with the International property measurements standards (IPMS 2: Residential) Not drawn to scale unless stated. Whilst every care is taken in the preparation of this plan, please check all dimensions, shapes and compass bearings before making any decisions reliant upon them.