

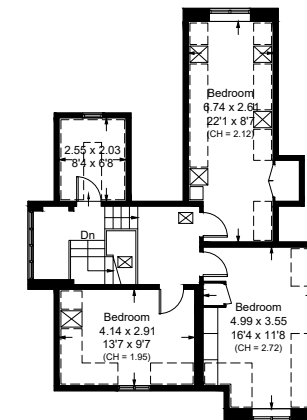
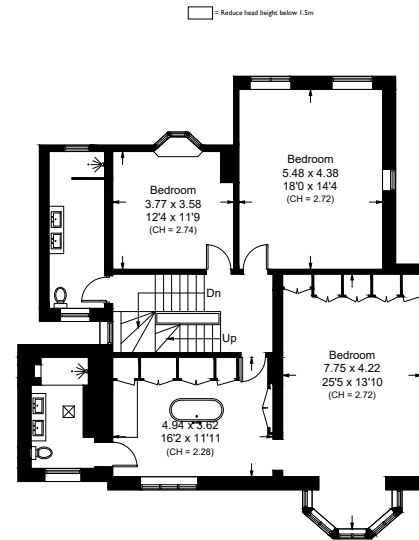
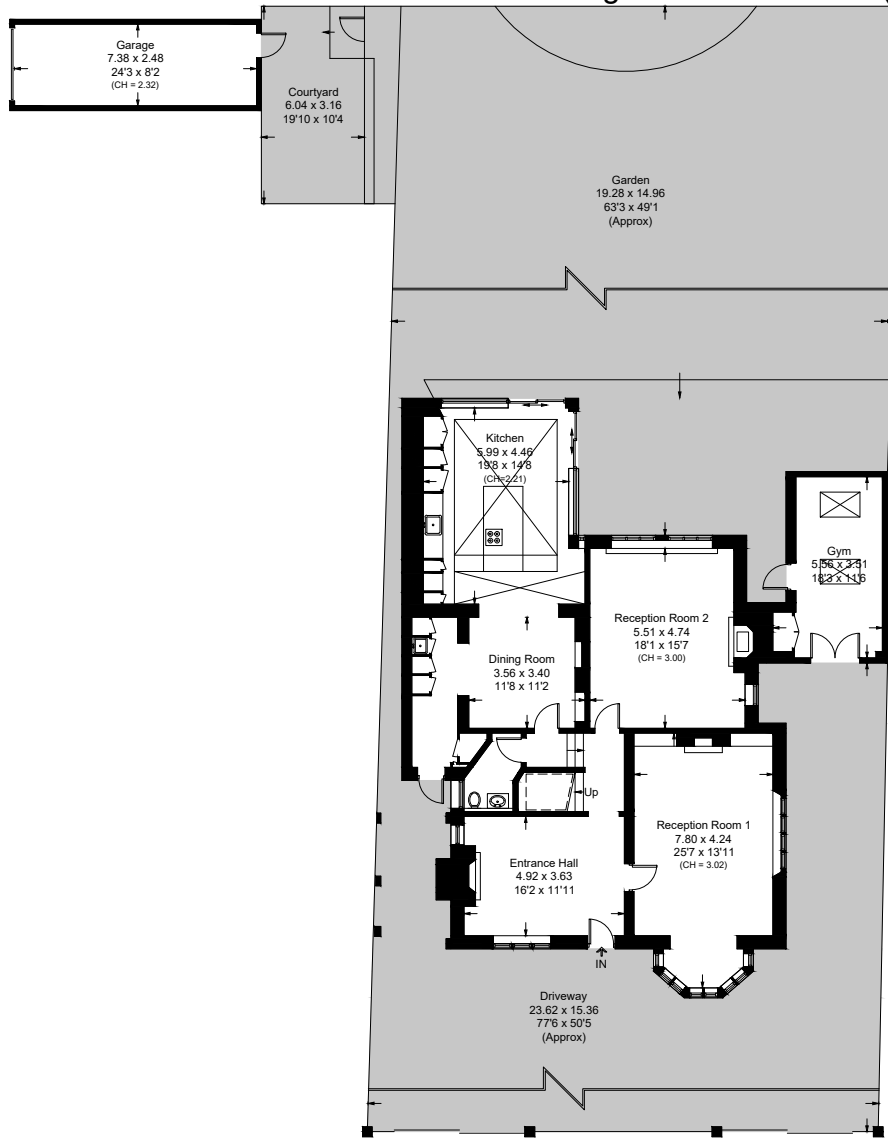
Wedderburn Road, NW3

Approximate Area = 328.7 sq m / 3538 sq ft

Garage / Gym = 34.3 sq m / 369 sq ft

Total = 363 sq m / 3907 sq ft

Including Limited Use Area (21.5 sq m / 231 sq ft)



Surveyed and drawn in accordance with the International property measurements standards (IPMS 2: Residential) Not drawn to scale unless stated. Whilst every care is taken in the preparation of this plan, please check all dimensions, shapes and compass bearings before making any decisions reliant upon them.