

Villas On The Heath, NW3

Approximate Area = 155.8 sq m / 1677 sq ft

Loft = 32.0 sq m / 345 sq ft

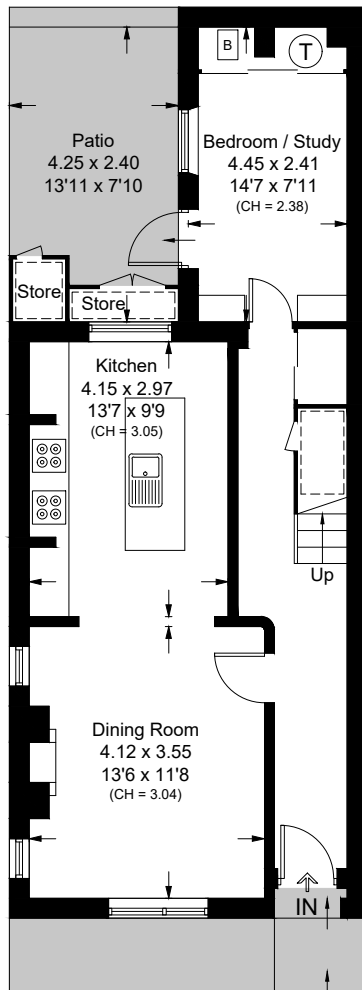
Stores = 1.6 sq m / 17 sq ft

Total = 189.4 sq m / 2039 sq ft

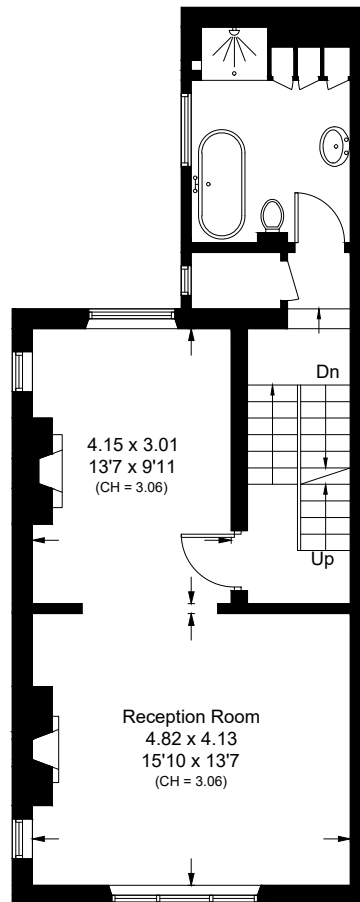
Including Limited Use Area (22.3 sq m / 240 sq ft)



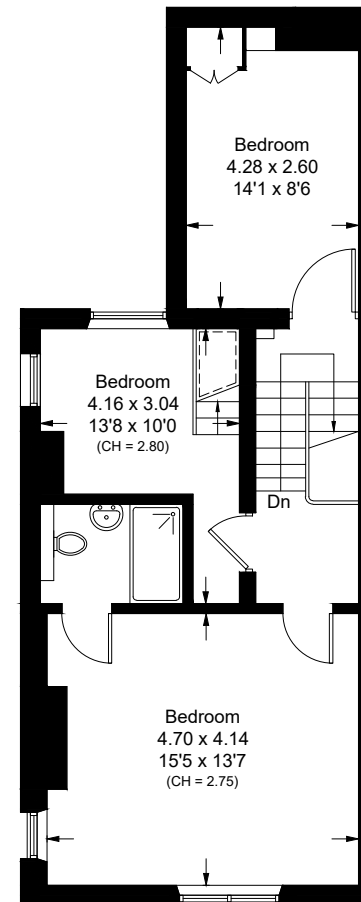
= Reduce head height below 1.5m



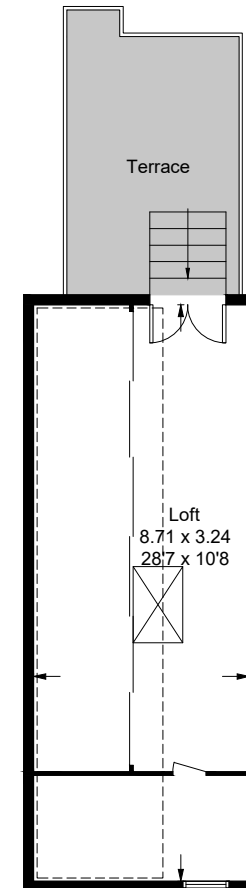
Ground Floor



First Floor



Second Floor



Loft

Surveyed and drawn in accordance with the International property measurements standards (IPMS 2: Residential) Not drawn to scale unless stated. Whilst every care is taken in the preparation of this plan, please check all dimensions, shapes and compass bearings before making any decisions reliant upon them.