

# Templewood Avenue, NW3

Approximate Area = 680.9 sq m / 7329 sq ft

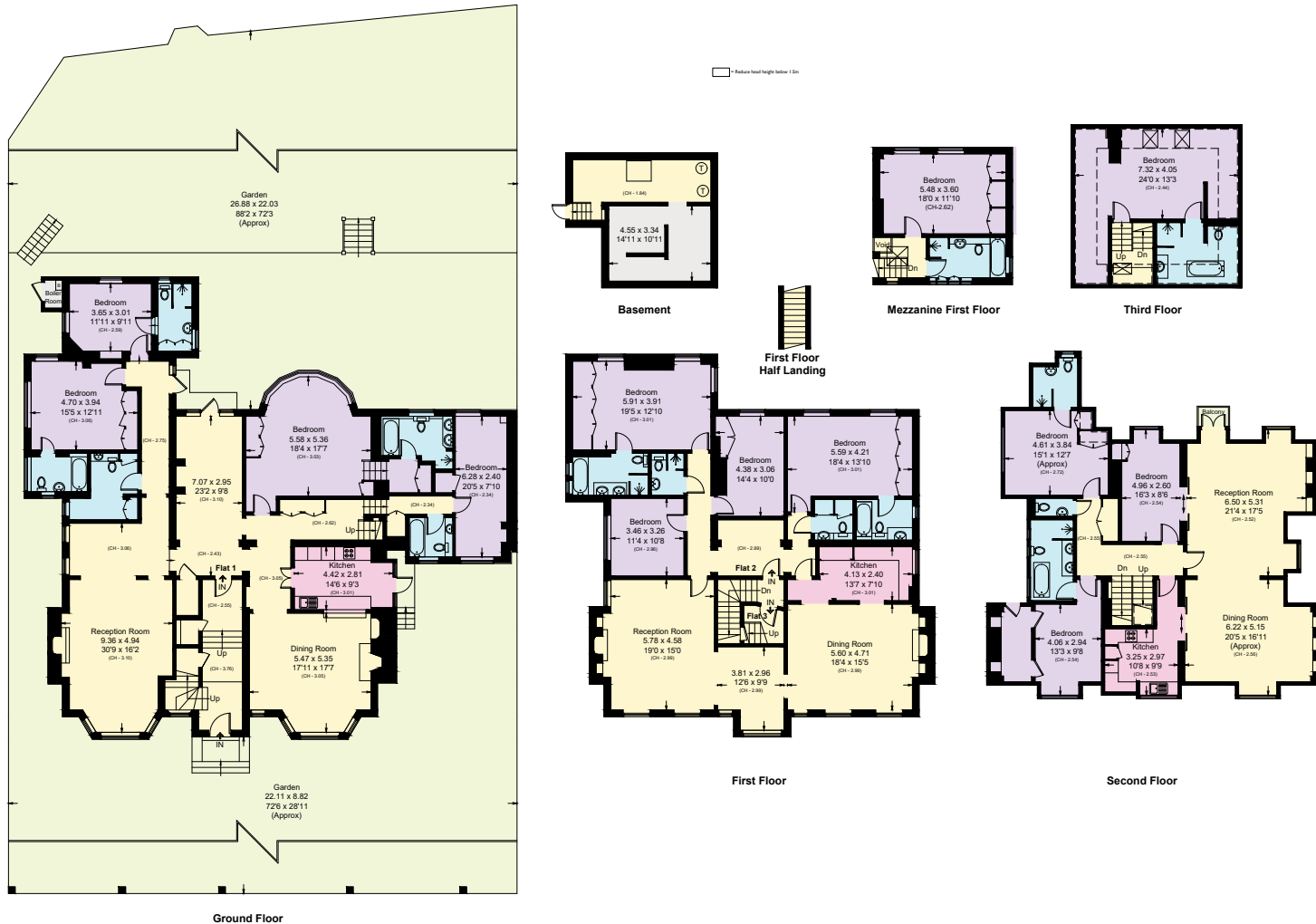
Basement = 29 sq m / 312 sq ft

Mezzanine First Floor = 31.1 sq m / 335 sq ft

Total = 741.0 sq m / 7976 sq ft

( Excluding Void / Boiler Room)

Including Limited Use Area (28.4 sq m / 306 sq ft)



Surveyed and drawn in accordance with the International property measurements standards (IPMS 2: Residential) Not drawn to scale unless stated. Whilst every care is taken in the preparation of this plan, please check all dimensions, shapes and compass bearings before making any decisions reliant upon them.