

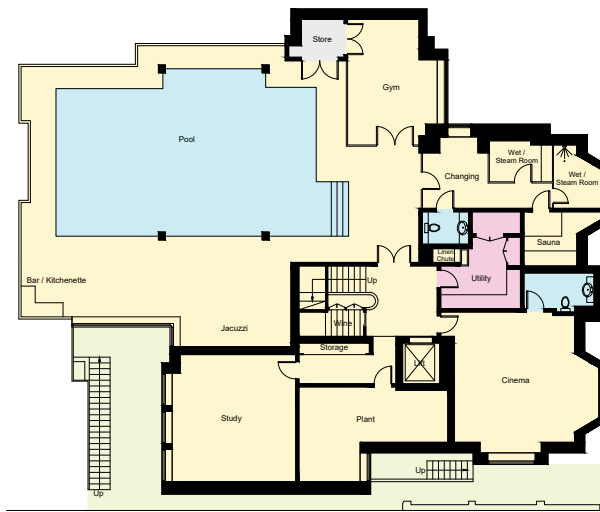
Templewood Avenue, NW3

Approximate Area

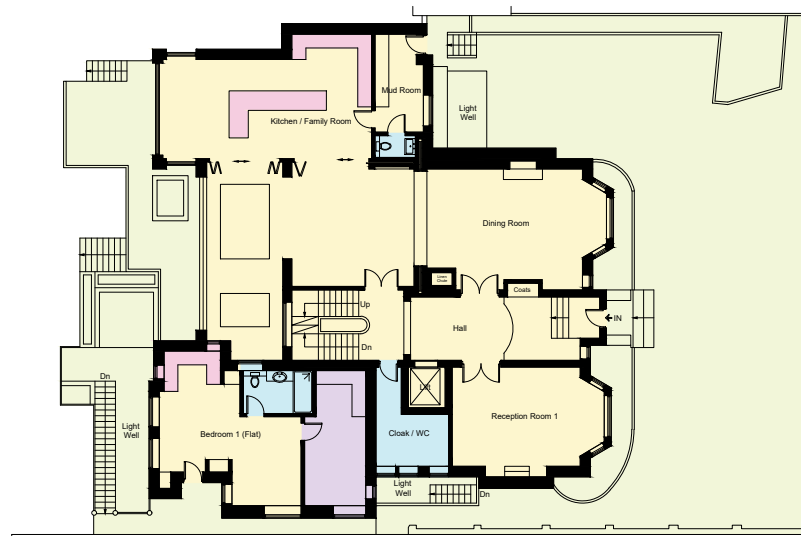
Main House = 1029.8 sq m / 11085 sq ft

Flat = 85.9 sq m / 925 sq ft

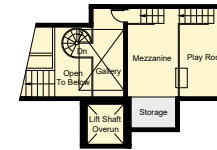
Total = 1115.7 sq m / 12010 sq ft



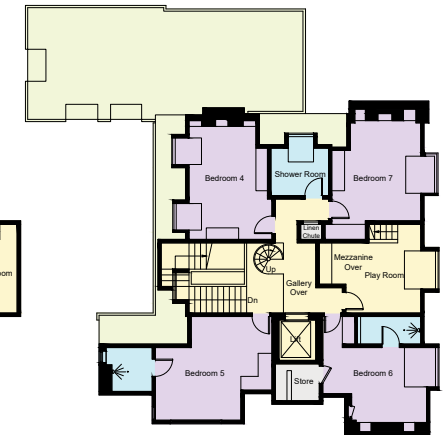
Basement



Ground Floor



Third Floor



Second Floor



First Floor

Surveyed and drawn in accordance with the International property measurements standards (IPMS 2: Residential) Not drawn to scale unless stated. Whilst every care is taken in the preparation of this plan, please check all dimensions, shapes and compass bearings before making any decisions reliant upon them.