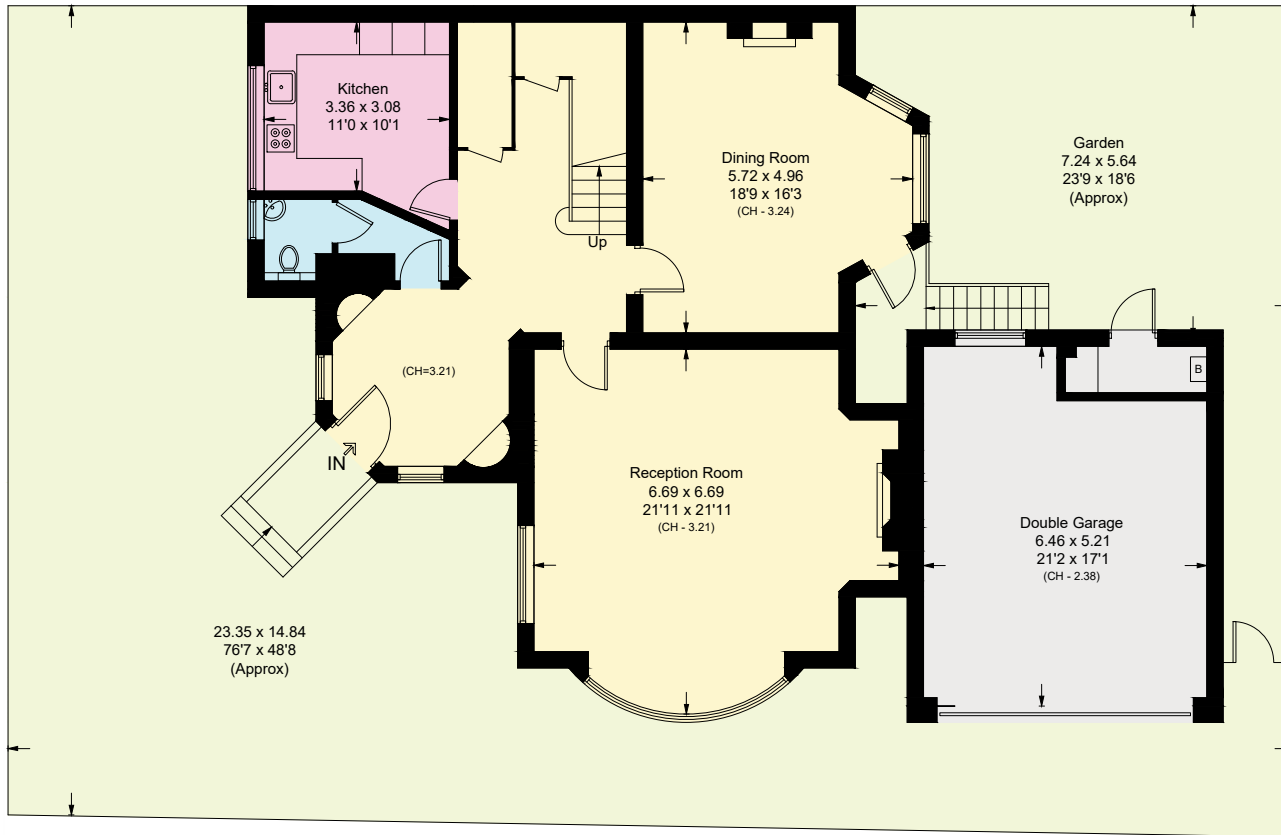
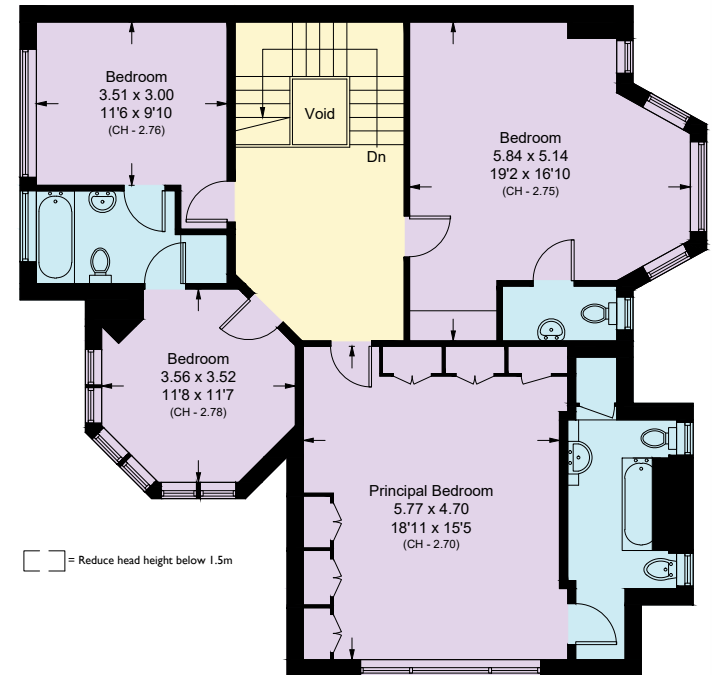


Kidderpore Avenue, NW3

Approximate Area = 220.8 sq m / 2377 sq ft
 Including Limited Use Area (1 sq m / 11 sq ft)
 Garage = 34.4 sq m / 370 sq ft
 Total = 255.2 sq m / 2747 sq ft
 (Excluding Void)



Ground Floor
 Approximate Area = 110.9 sq m / 1194 sq ft
 (Excluding Garage)



First Floor
 Approximate Area = 109.9 sq m / 1183 sq ft
 Including Limited Use Area (1 sq m / 11 sq ft)

Surveyed and drawn in accordance with the International property measurements standards (IPMS 2: Residential) Not drawn to scale unless stated.
 Whilst every care is taken in the preparation of this plan, please check all dimensions, shapes and compass bearings before making any decisions reliant upon them.