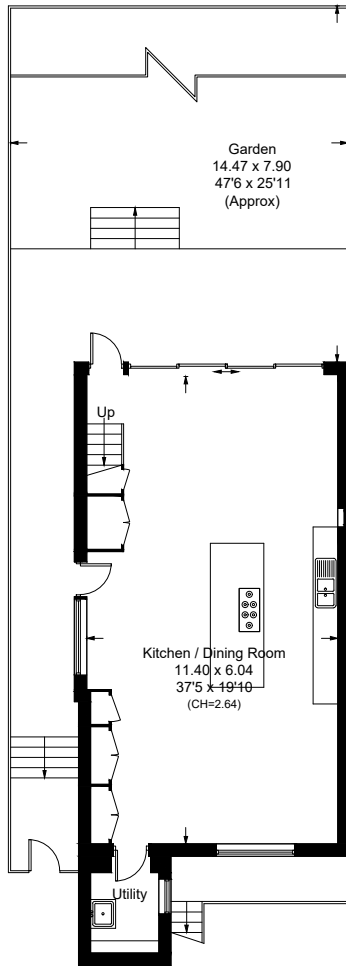
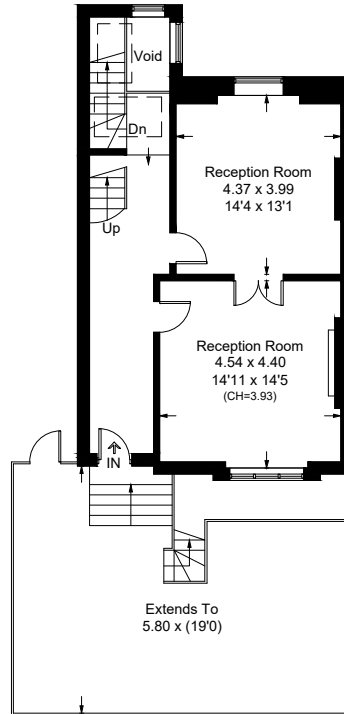


Dartmouth Park Road, NW5

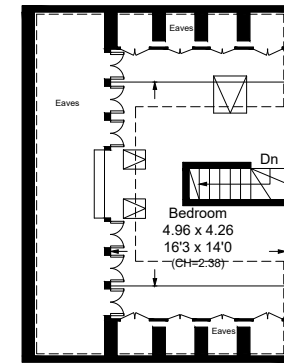
Approximate Area = 288.8 sq m / 3108 sq ft
Including Limited Use Area (37.2 sq m / 400 sq ft) And Eaves / Excluding Void



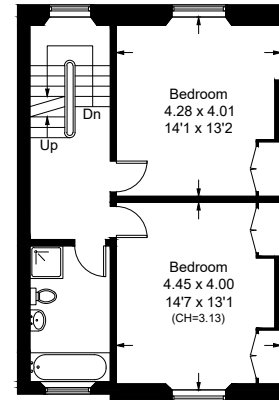
Lower Ground Floor
Approximate Area = 74.5 sq m / 802 sq ft



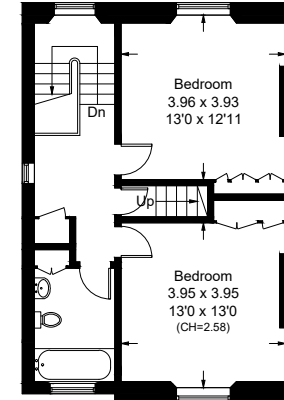
Upper Ground Floor
Approximate Area = 55.6 sq m / 598 sq ft
(Excluding Void)



Third Floor
Approximate Area = 50.9 sq m / 548 sq ft
Including Limited Use Area (37.2 sq m / 400 sq ft) And Eaves



First Floor
Approximate Area = 54 sq m / 581 sq ft



Second Floor
Approximate Area = 53.8 sq m / 579 sq ft

Surveyed and drawn in accordance with the International property measurements standards (IPMS 2: Residential) Not drawn to scale unless stated. Whilst every care is taken in the preparation of this plan, please check all dimensions, shapes and compass bearings before making any decisions reliant upon them.