

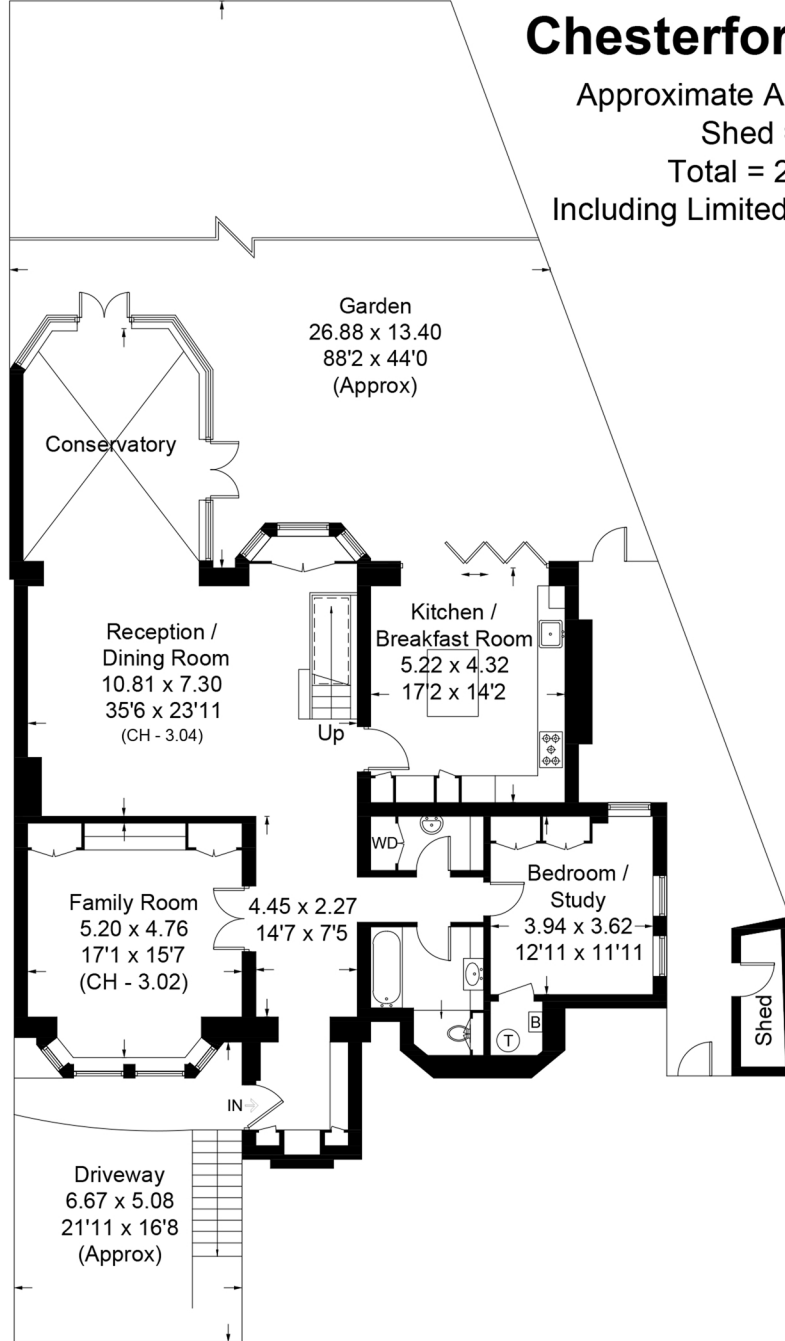
Chesterford Gardens, NW3

Approximate Area = 280.4 sq m / 3018 sq ft

Shed = 2.8 sq m / 30 sq ft

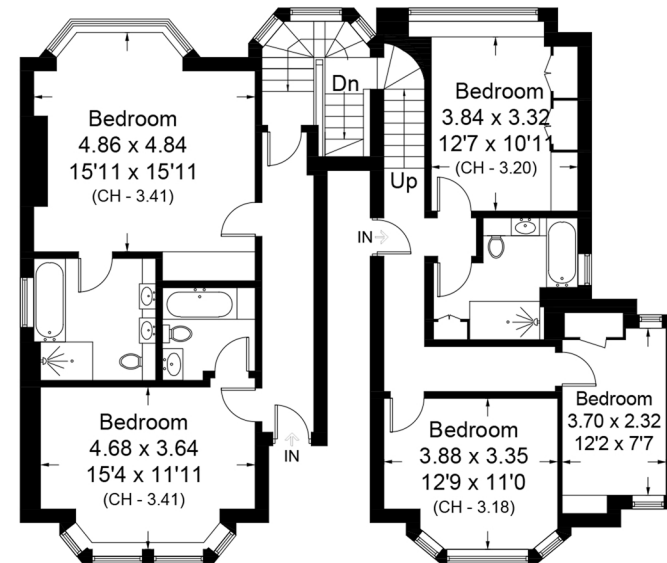
Total = 283.2 sq m / 3048 sq ft

Including Limited Use Area (1.1 sq m / 12 sq ft)



Lower Ground Floor

☐ = Reduce head height below 1.5m



Raised Ground Floor

Surveyed and drawn in accordance with the International property measurements standards (IPMS 2: Residential) Not drawn to scale unless stated. Whilst every care is taken in the preparation of this plan, please check all dimensions, shapes and compass bearings before making any decisions reliant upon them.