

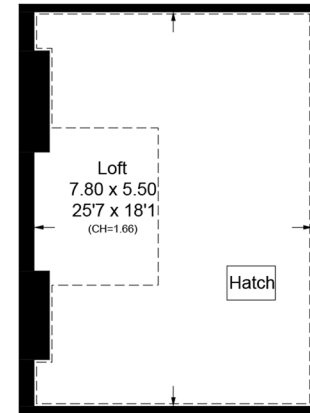
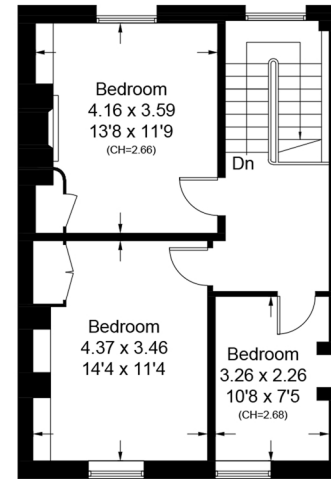
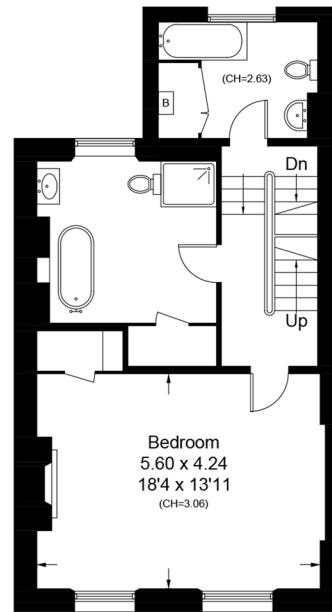
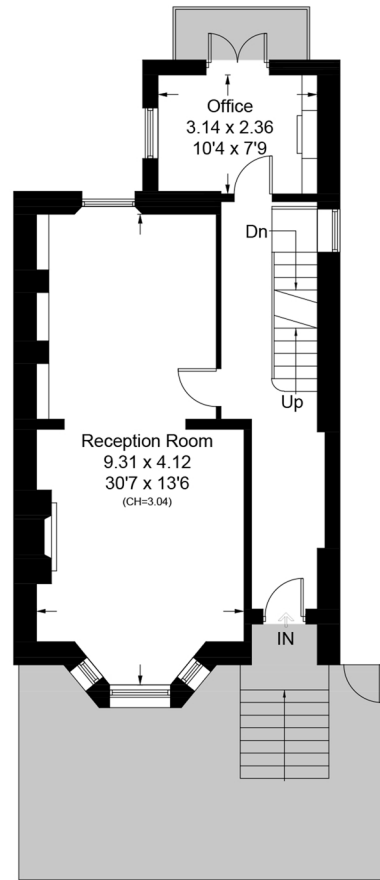
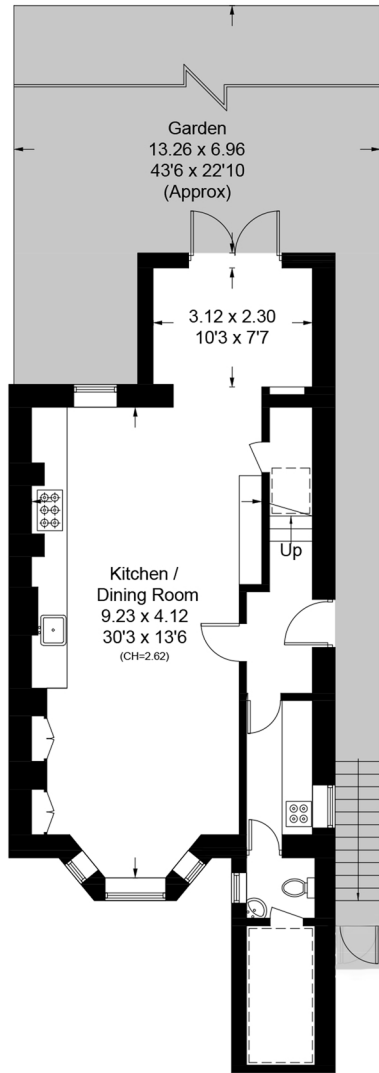
Laurier Road, NW5

Approximate Area = 227.8 sq m / 2452 sq ft

Loft = 42.9 sq m / 462 sq ft

Total = 270.7 sq m / 2914 sq ft

Including Limited Use Area (38.9 sq m / 419 sq ft)



= Reduce head height below 1.5m

Lower Ground Floor

Raised Ground Floor

First Floor

Second Floor

Third Floor (Loft)

Surveyed and drawn in accordance with the International property measurements standards (IPMS 2: Residential) Not drawn to scale unless stated. Whilst every care is taken in the preparation of this plan, please check all dimensions, shapes and compass bearings before making any decisions reliant upon them.