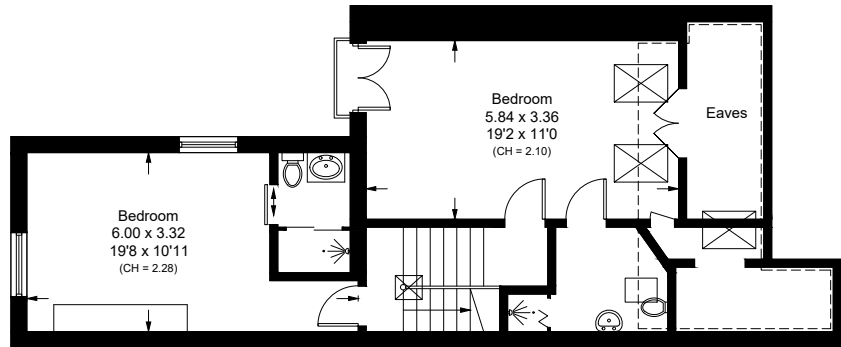
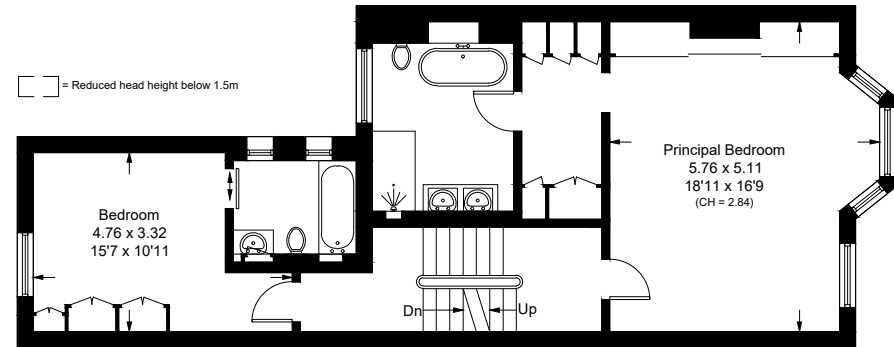


Narcissus Road, NW6

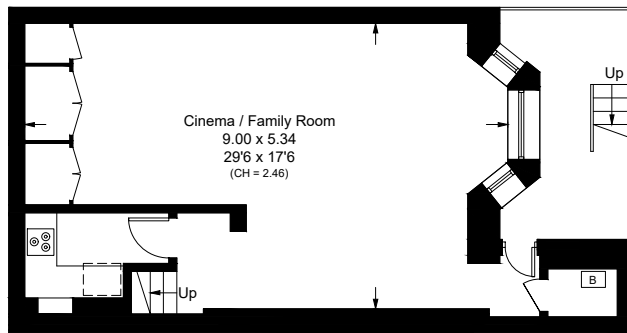
Approximate Area = 273.4 sq m / 2943 sq ft
Including Limited Use Area (15.4 sq m / 166 sq ft)



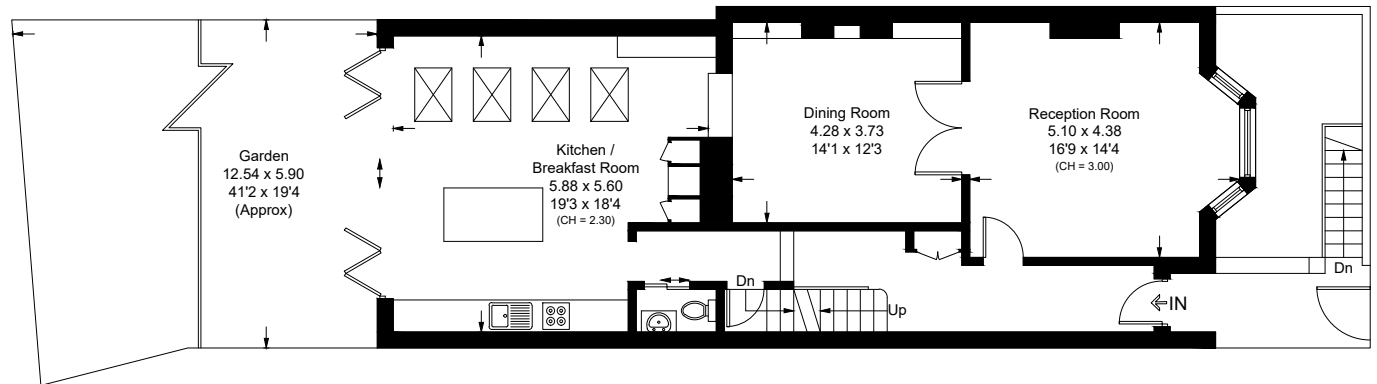
Second Floor



First Floor



Lower Ground Floor



Ground Floor

Surveyed and drawn in accordance with the International property measurements standards (IPMS 2: Residential) Not drawn to scale unless stated.
Whilst every care is taken in the preparation of this plan, please check all dimensions, shapes and compass bearings before making any decisions reliant upon them.