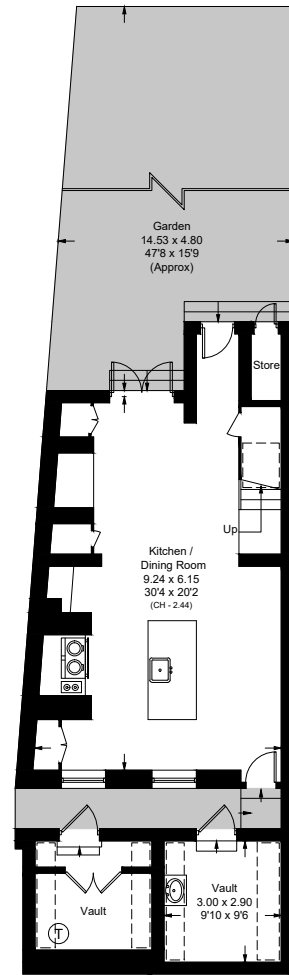
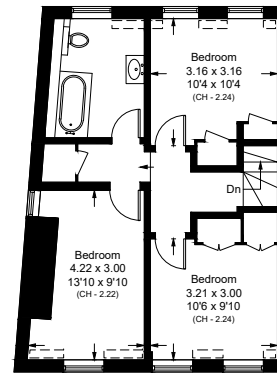


# New End, NW3

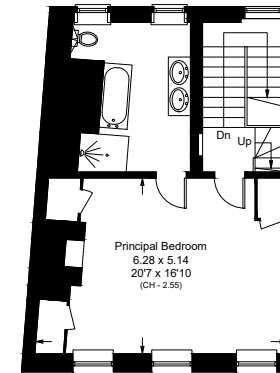
Approximate Area = 267.9 sq m / 2884 sq ft  
 Vaults / External Store = 19.0 sq m / 204 sq ft  
 Total = 286.9 sq m / 3088 sq ft  
 (Including Limited Use Area 12.1 sq m / 130 sq ft)



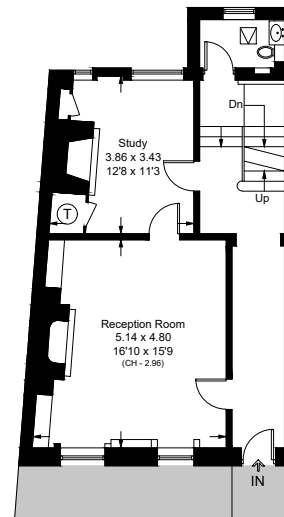
Lower Ground Floor



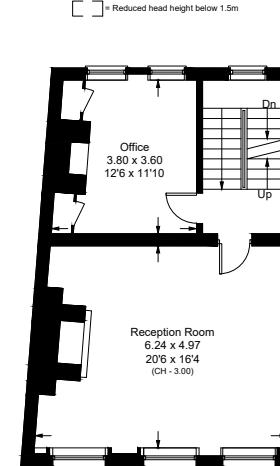
Third Floor



Second Floor



Ground Floor



First Floor

☐ = Reduced head height below 1.5m

Surveyed and drawn in accordance with the International property measurements standards (IPMS 2: Residential) Not drawn to scale unless stated.  
 Whilst every care is taken in the preparation of this plan, please check all dimensions, shapes and compass bearings before making any decisions reliant upon them.