

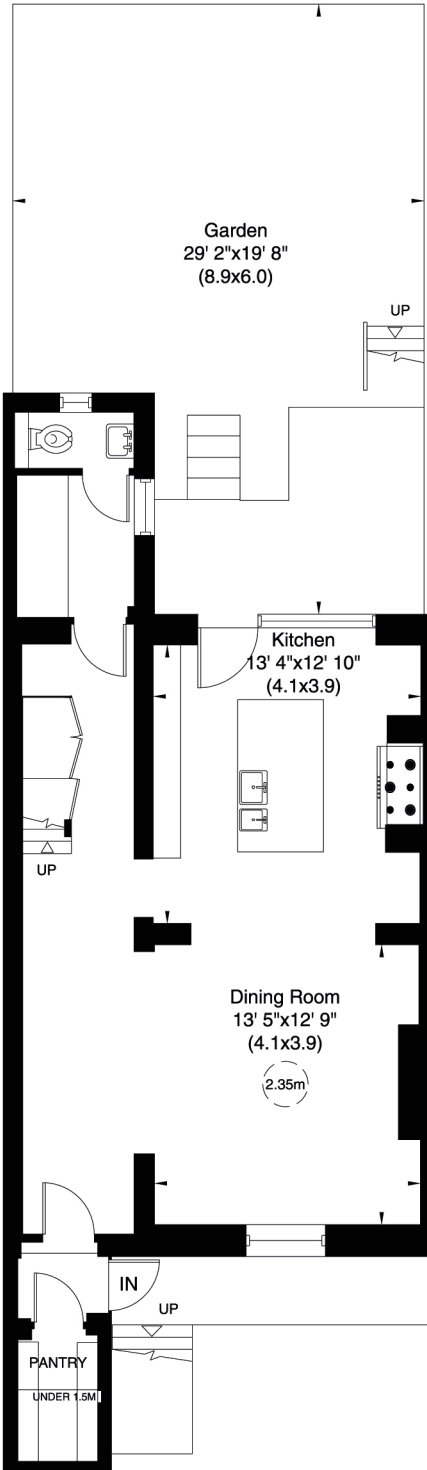
Highgate West Hill, N6

Approximate Gross Internal Area

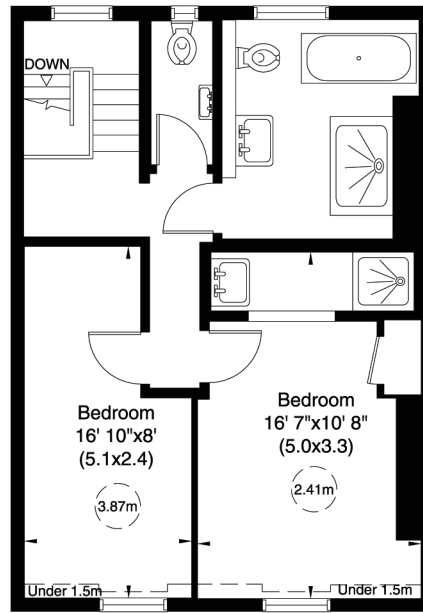
228 sq m/ 2452 sq ft Including Under 1.5m and Loft

212 sqm/ 2277 sq ft Excluding Under 1.5m and Loft

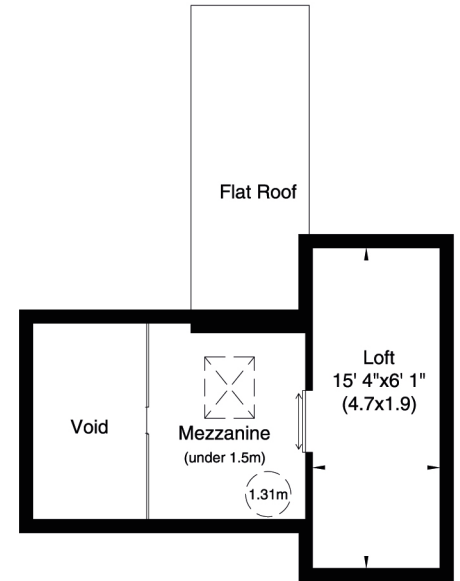
Not to Scale, for identification only



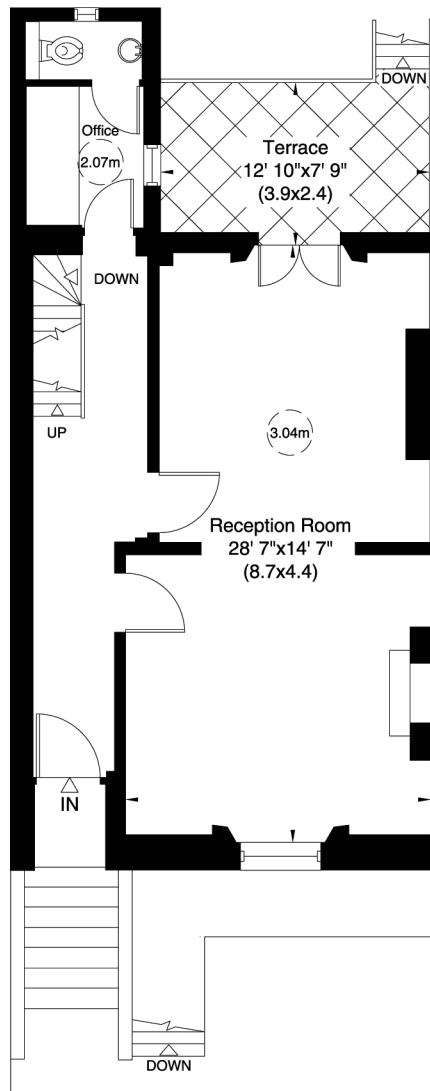
Lower Ground Floor



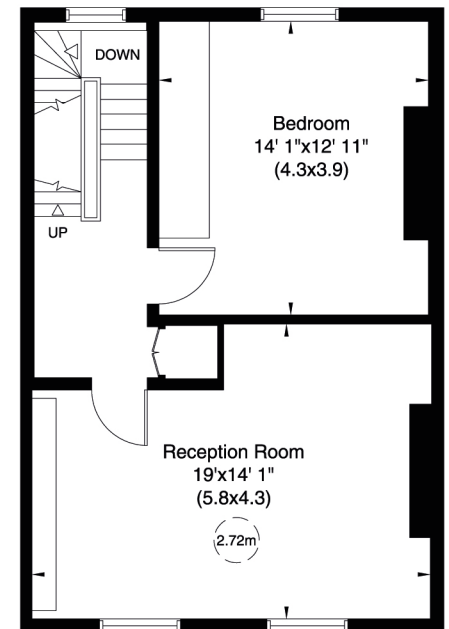
Second Floor



Third Floor



Raised Ground Floor



First Floor

For guidance only and must not be relied upon as a statement of fact or used for valuation purposes.

All measurements and areas are approximate only (and have been prepared in accordance with the current edition of the RICS Code of Measuring Practice).

