

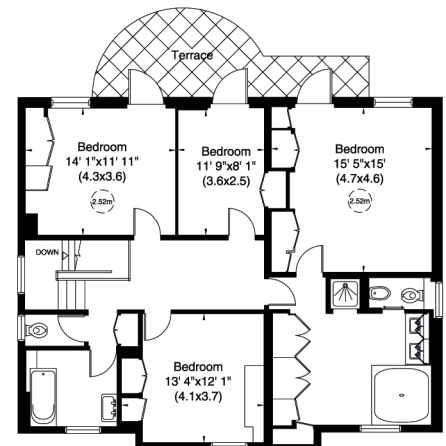
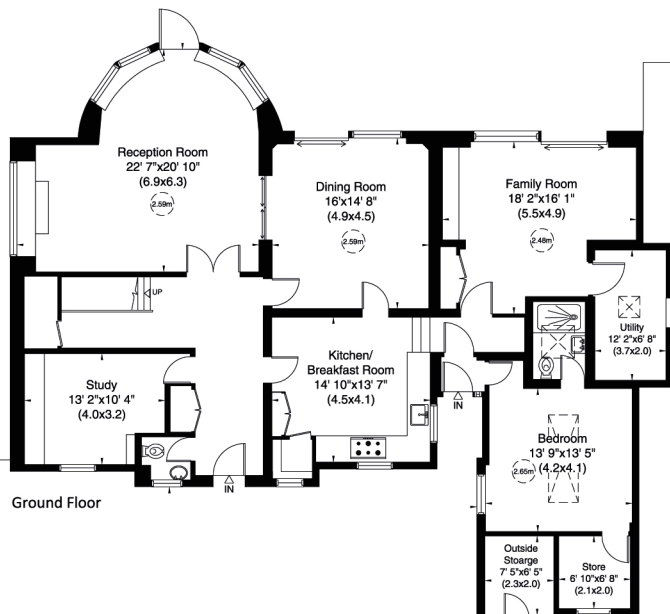
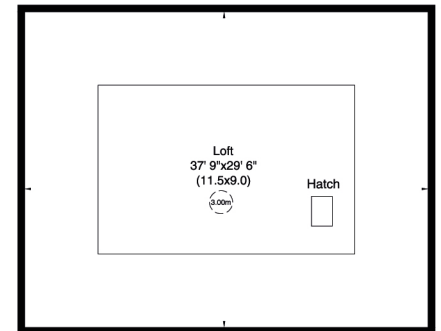
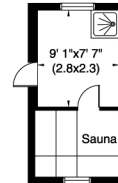
Pitt House, North End Avenue, N3

Approximate Gross Internal Area
411 sq m/ 4428 sq ft Including Loft,
Outside Storage and Sauna Area
292 sq m/ 3144 sq ft Excluding Loft,
Outside Storage and Sauna Area
Loft 104 Sq m/ 1114 Sq ft

Not to Scale, for identification only



Garden
117' 11"x99'
(35.9x30.2)



Driveway
107' 2"x48' 7"
(32.7x14.8)

Car Port
20' 5"x17' 9"
(6.2x5.4)

Front Garden
68' 8"x37' 9"
(20.9x11.5)

Plot Size (approx.) 0.474747 Acre

For guidance only and must not be relied upon as a statement of fact or used for valuation purposes.
All measurements and areas are approximate only (and have been prepared in accordance with the current edition of the RICS Code of Measuring Practice).

