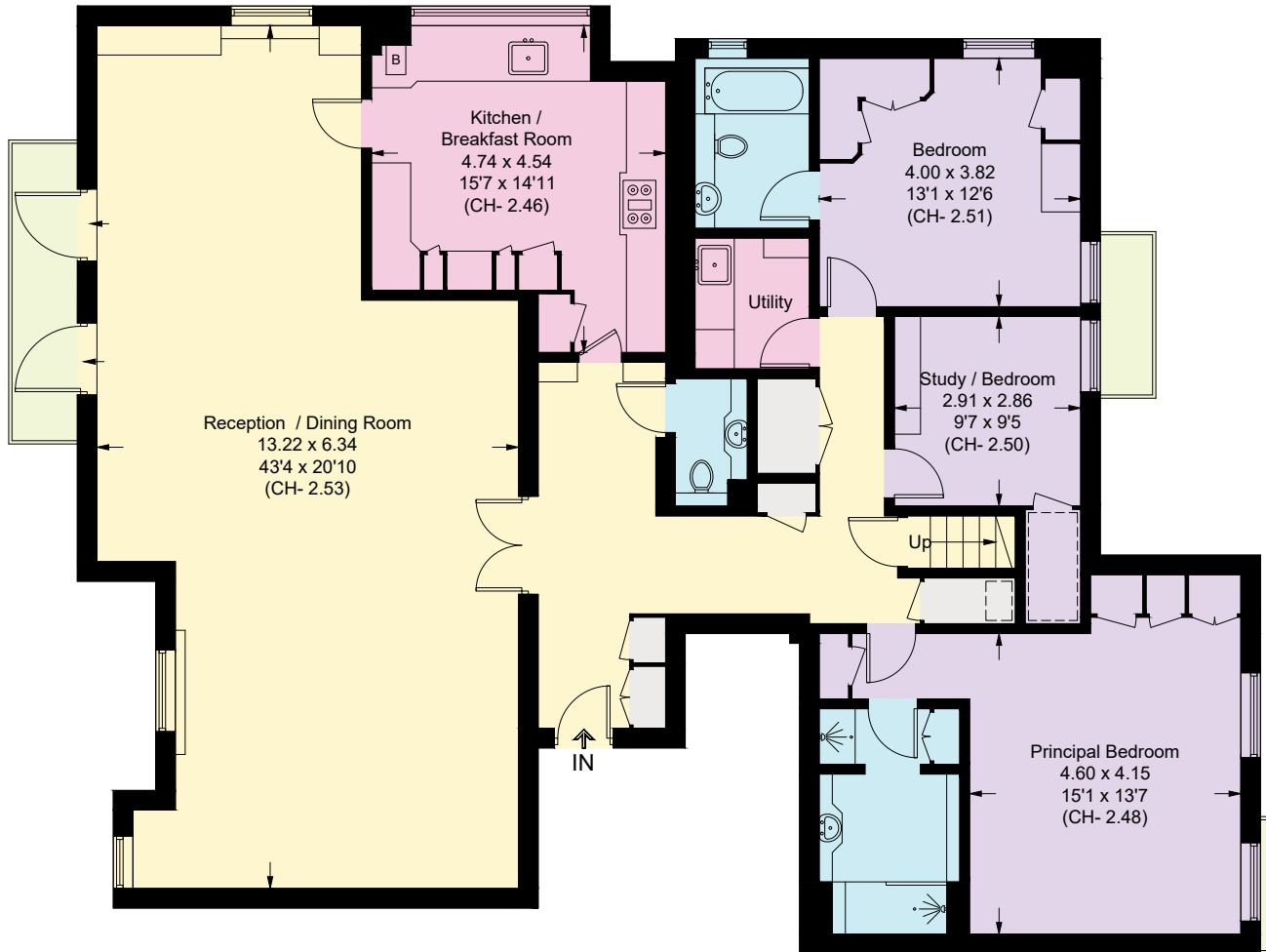


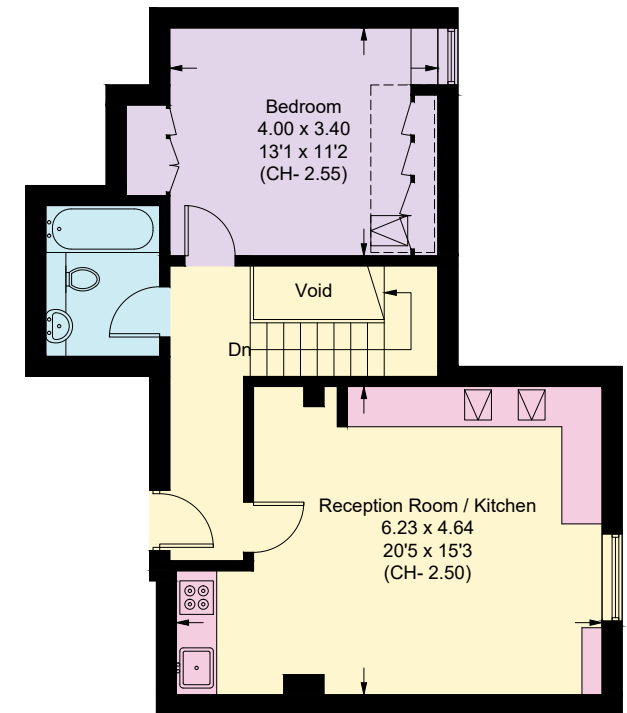
Maresfield Gardens, NW3

Approximate Area = 246.5 sq m / 2653 sq ft
(Excluding Void)

Including Limited Use Area (5.6 sq m / 60 sq ft)



☐ = Reduce head height below 1.5m



First Floor

Approximate Area = 191.8 sq m / 2064 sq ft
Including Limited Use Area (3.1 sq m / 33 sq ft)

Second Floor

Approximate Area = 54.7 sq m / 589 sq ft
Including Limited Use Area (2.5 sq m / 27 sq ft)

Surveyed and drawn in accordance with the International property measurements standards (IPMS 2: Residential) Not drawn to scale unless stated.
Whilst every care is taken in the preparation of this plan, please check all dimensions, shapes and compass bearings before making any decisions reliant upon them.