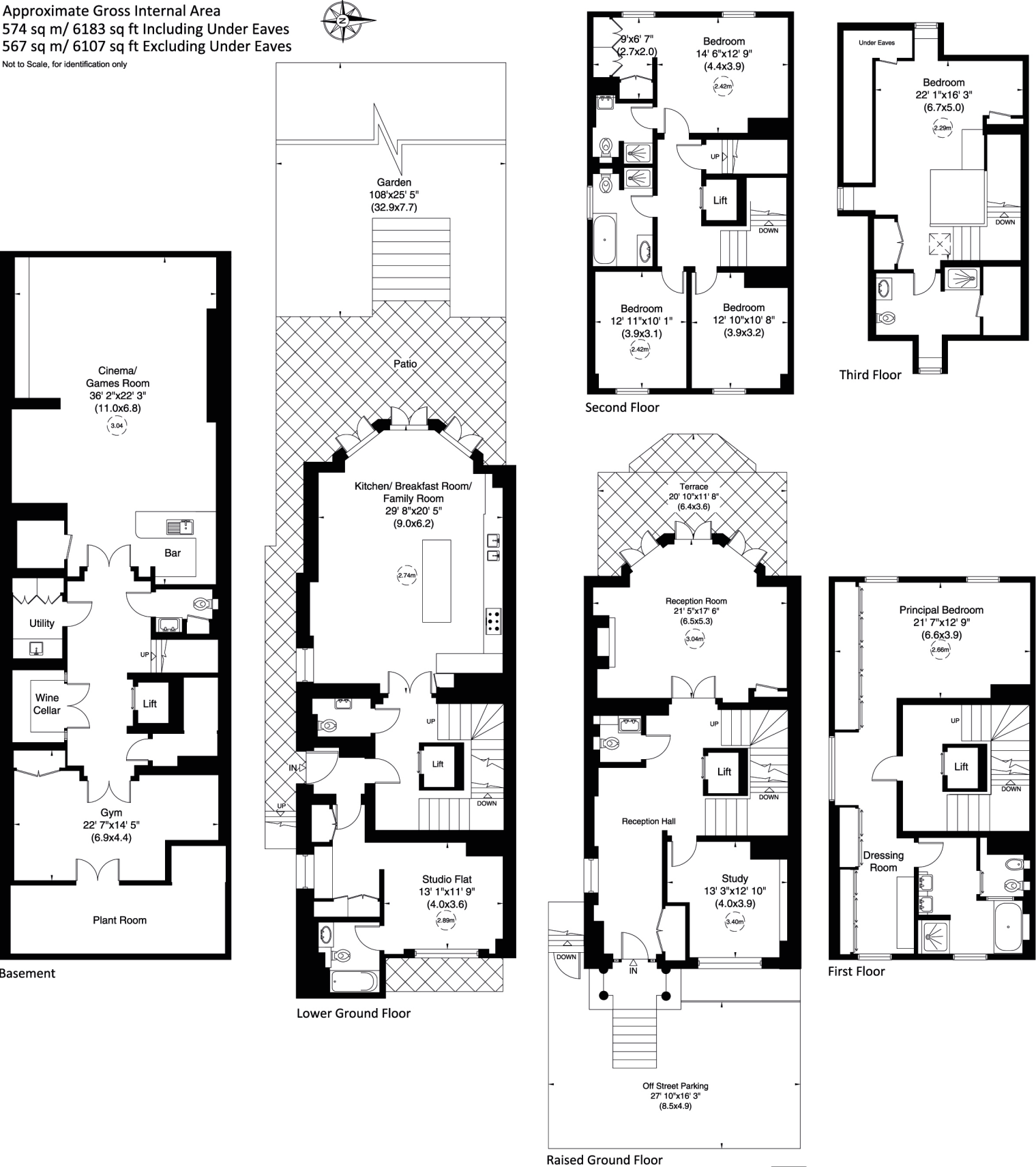


Byron Villa, The Grove, N6

Approximate Gross Internal Area
574 sq m/ 6183 sq ft Including Under Eaves
567 sq m/ 6107 sq ft Excluding Under Eaves

Not to Scale, for identification only



For guidance only and must not be relied upon as a statement of fact or used for valuation purposes.
All measurements and areas are approximate only (and have been prepared in accordance with the current edition of the RICS Code of Measuring Practice).

