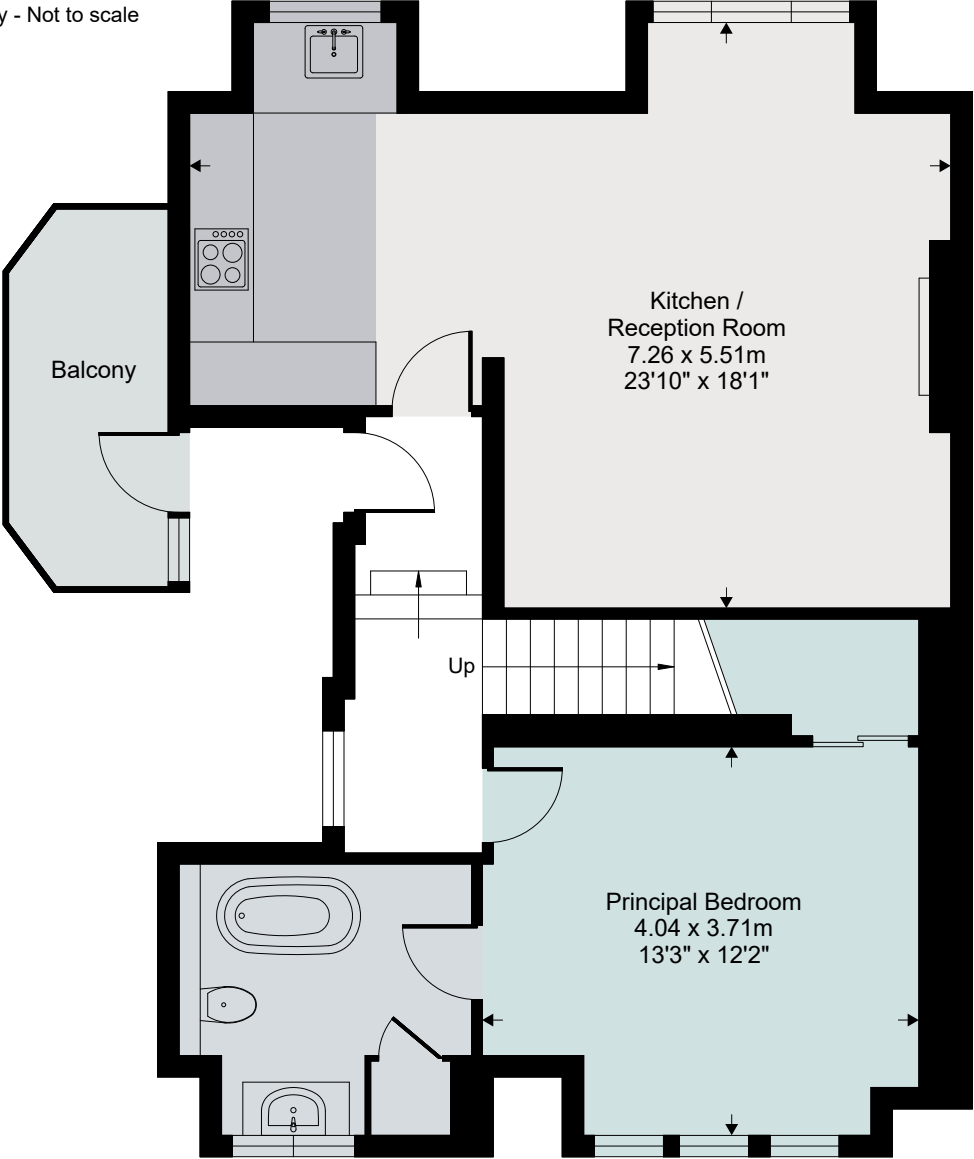


Gainsborough Gardens, London, NW3 1BJ

Approximate Area = 914 sq ft / 84.9 sq m
Limited Use Area(s) = 137 sq ft / 12.7 sq m
Total = 1051 sq ft / 97.6 sq m

For identification only - Not to scale



Second floor



Third floor

Denotes restricted head height



Certified Property Measurer

Floor plan produced in accordance with RICS Property Measurement Standards incorporating International Property Measurement Standards (IPMS2 Residential). © n̄cheom 2024. Produced for Savills (UK) Limited. REF: 1138655