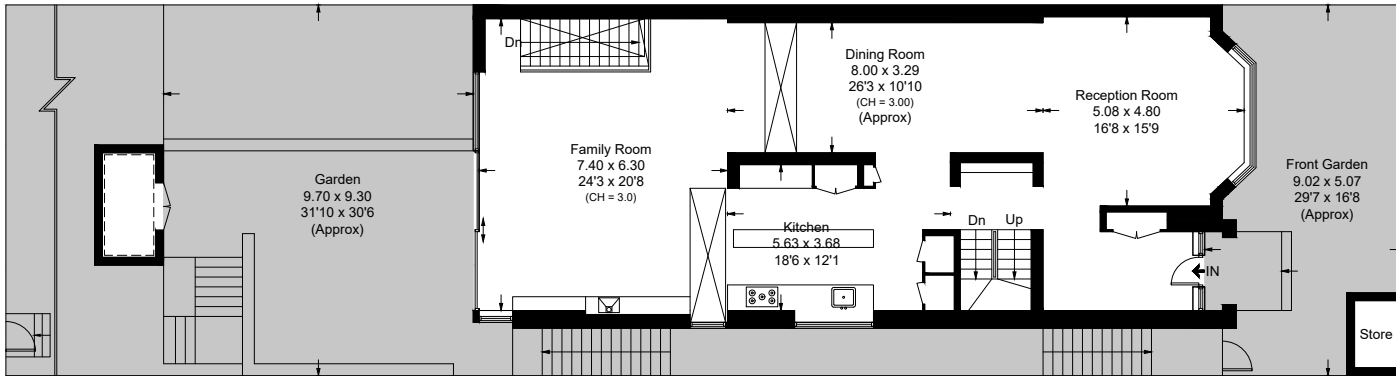
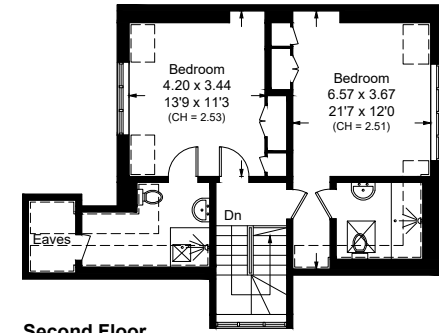


Kidderpore Gardens, NW3

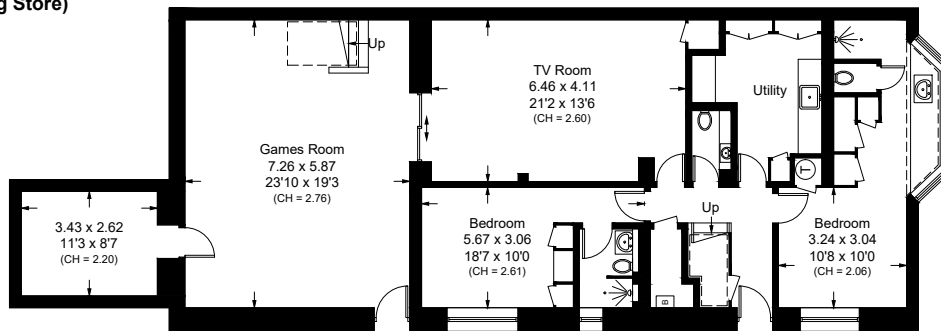
Approximate Area = 424.9 sq m / 4574 sq ft
 Store & External Cupboard = 5.4 sq m / 58 sq ft
 Total = 430.3 sq m / 4632 sq ft
 Including Limited Use Area (15.4 sq m / 166 sq ft) and Eaves



Ground Floor
 Approximate Area
 139.3 sq m / 1499 sq ft (Excluding Store)

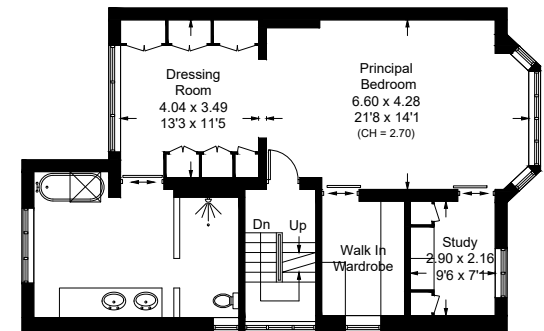


Second Floor
 Approximate Area
 54.2 sq m / 583 sq ft



Lower Ground Floor
 Approximate Area
 147.7 sq m / 1590 sq ft

☐ = Reduced head height below 1.5m



First Floor
 Approximate Area
 83.7 sq m / 901 sq ft

Surveyed and drawn in accordance with the International property measurements standards (IPMS 2: Residential) Not drawn to scale unless stated.
 Whilst every care is taken in the preparation of this plan, please check all dimensions, shapes and compass bearings before making any decisions reliant upon them.