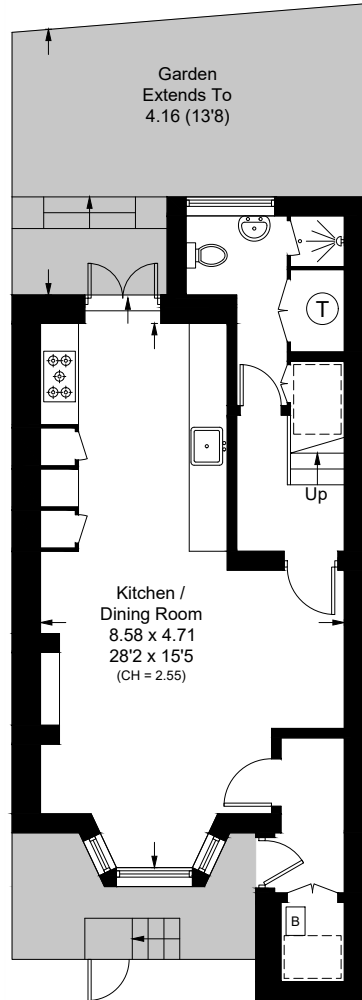
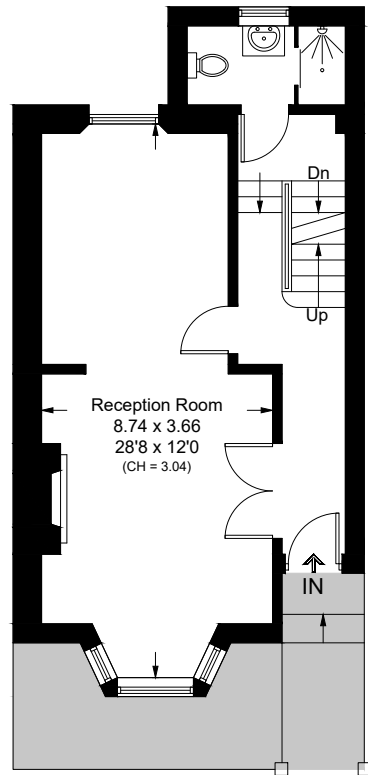


Gayton Road, NW3

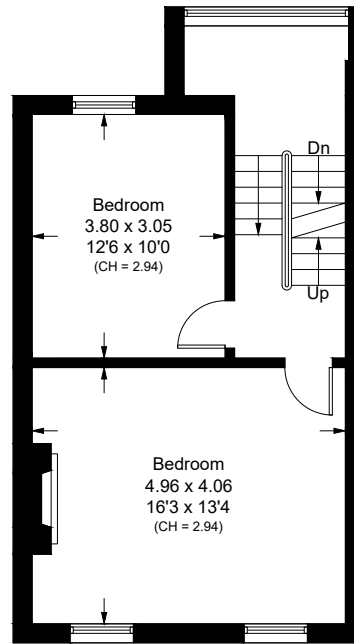
Approximate Area = 206.7 sq m / 2225 sq ft
Including Limited Use Area (3.0 sq m / 32 sq ft)



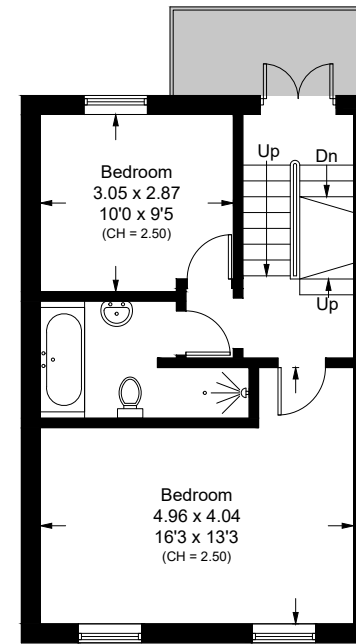
Lower Ground Floor



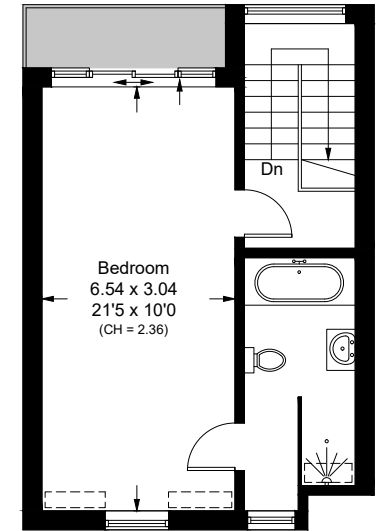
Raised Ground Floor



First Floor



Second Floor



Third Floor

= Reduced head height below 1.5m

Surveyed and drawn in accordance with the International property measurements standards (IPMS 2: Residential) Not drawn to scale unless stated.
Whilst every care is taken in the preparation of this plan, please check all dimensions, shapes and compass bearings before making any decisions reliant upon them.