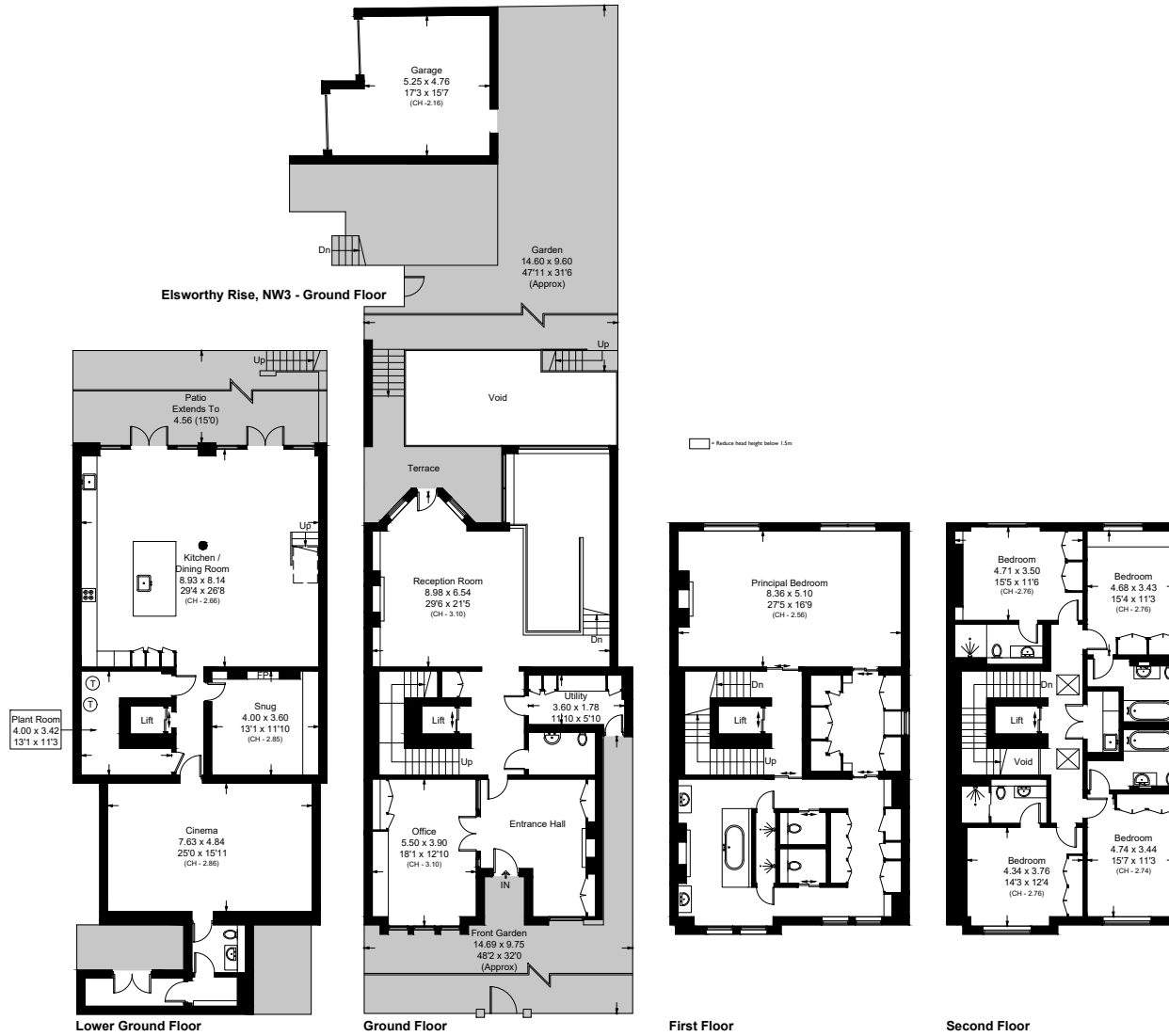


Elsworthy Road, NW3

Approximate Area = 533.7 sq m / 5745 sq ft
 Including Limited Use Area (2.0 sq m / 21 sq ft) / Excluding Void
 Garage = 28 sq m / 301 sq ft
 Total = 561.7sq m / 6046 sq ft



Surveyed and drawn in accordance with the International property measurements standards (IPMS 2: Residential) Not drawn to scale unless stated.
 Whilst every care is taken in the preparation of this plan, please check all dimensions, shapes and compass bearings before making any decisions reliant upon them.