

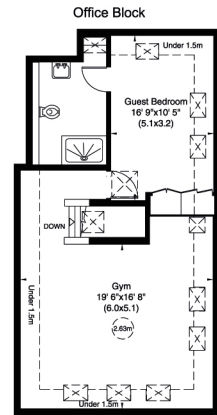
Oakfield House, The Ridgeway, NW7

Approximate Gross Internal Area

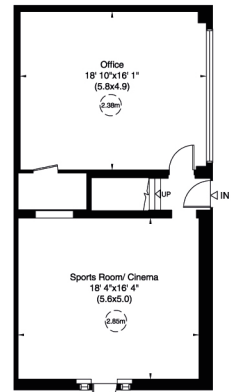
816 sq m / 8786 sq ft Including Storage Building, Summer House, Office Block, Under 1.5m and Under Eaves
 626 sq m / 6743 sq ft Excluding Storage Building, Summer House, Office Block, Under 1.5m and Under Eaves



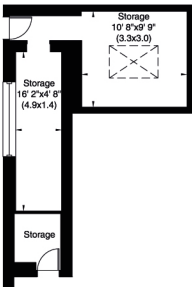
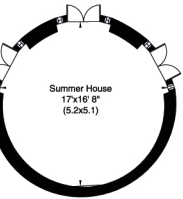
Not to Scale, for identification only



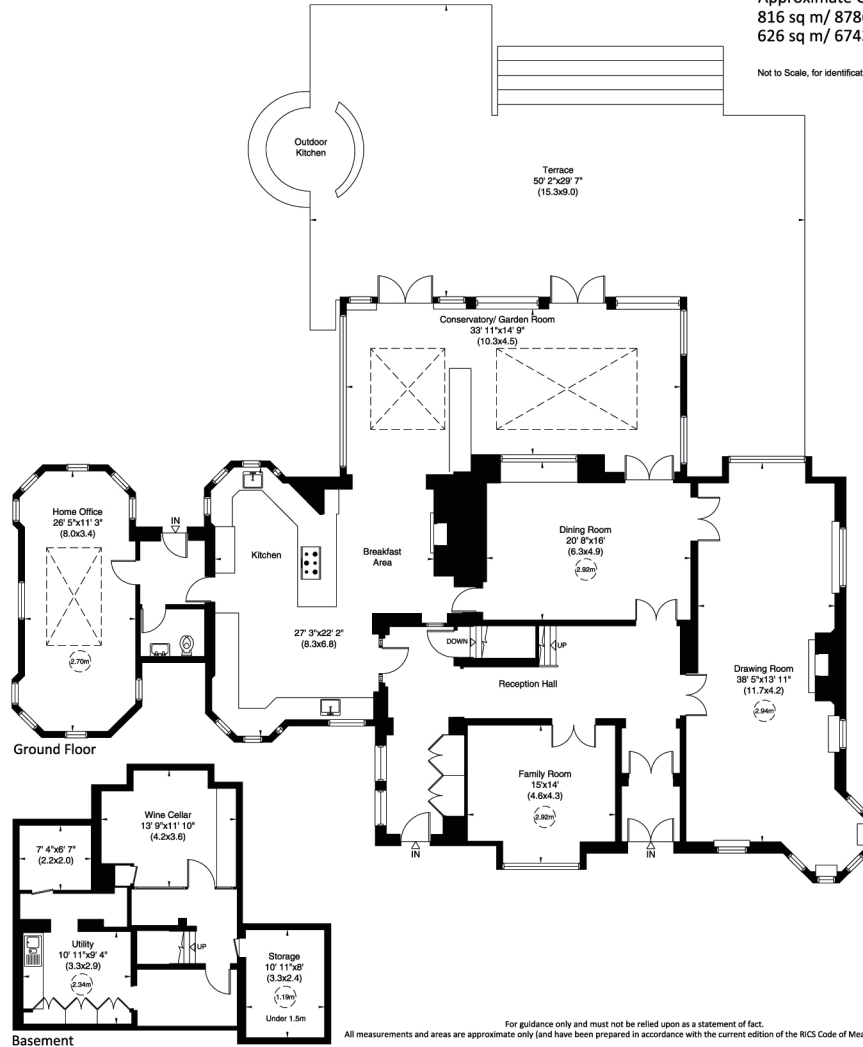
First Floor



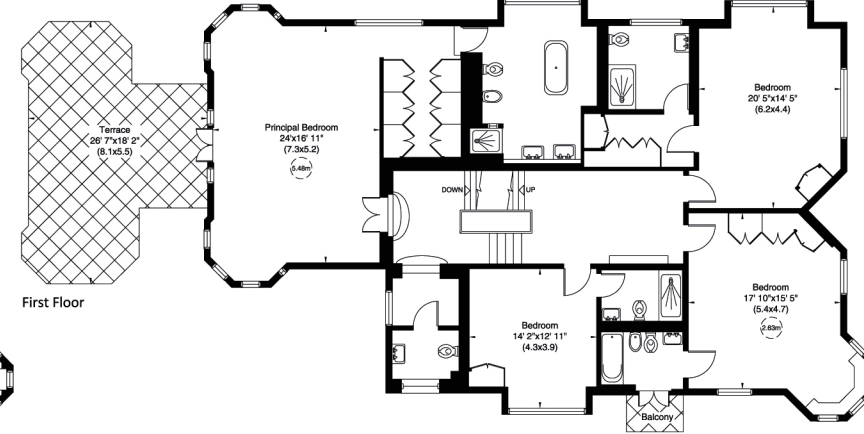
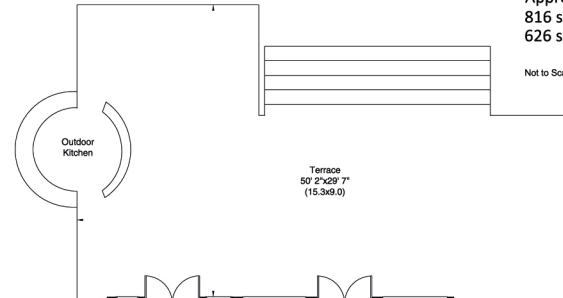
Ground Floor



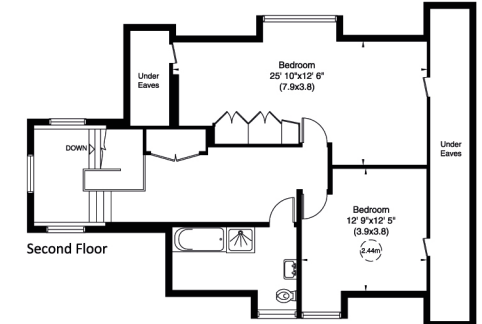
Storage Building



Basement



First Floor



Second Floor

For guidance only and must not be relied upon as a statement of fact.
 All measurements and areas are approximate only (and have been prepared in accordance with the current edition of the RICS Code of Measuring Practice).

