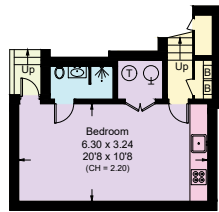
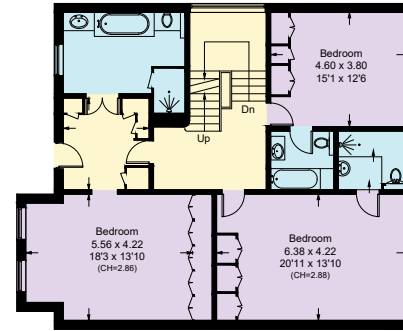


Harley Road, NW3

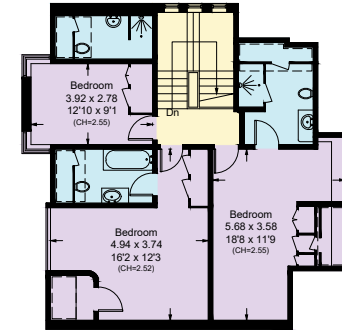
Approximate Area = 512.5 sq m / 5517 sq ft
 (Including Garden Studio)
 Including Limited Use Area (10.4 sq m / 112 sq ft)



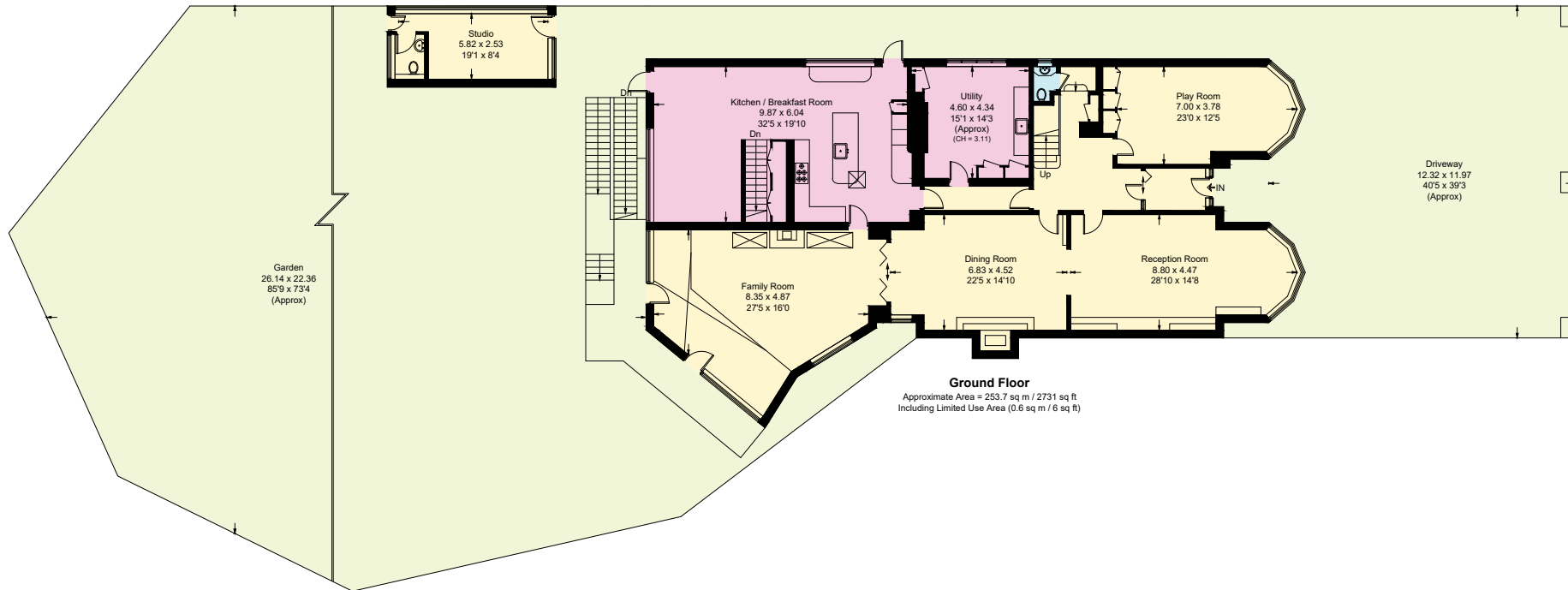
Basement
 Approximate Area = 29.6 sq m / 319 sq ft



First Floor
 Approximate Area = 123.1 sq m / 1325 sq ft
 Including Limited Use Area (0.9 sq m / 10 sq ft)



Second Floor
 Approximate Area = 90.7 sq m / 976 sq ft
 Including Limited Use Area (8.9 sq m / 96 sq ft)



Ground Floor
 Approximate Area = 253.7 sq m / 2731 sq ft
 Including Limited Use Area (0.6 sq m / 6 sq ft)

Surveyed and drawn in accordance with the International property measurements standards (IPMS 2: Residential) Not drawn to scale unless stated.
 Whilst every care is taken in the preparation of this plan, please check all dimensions, shapes and compass bearings before making any decisions reliant upon them.