

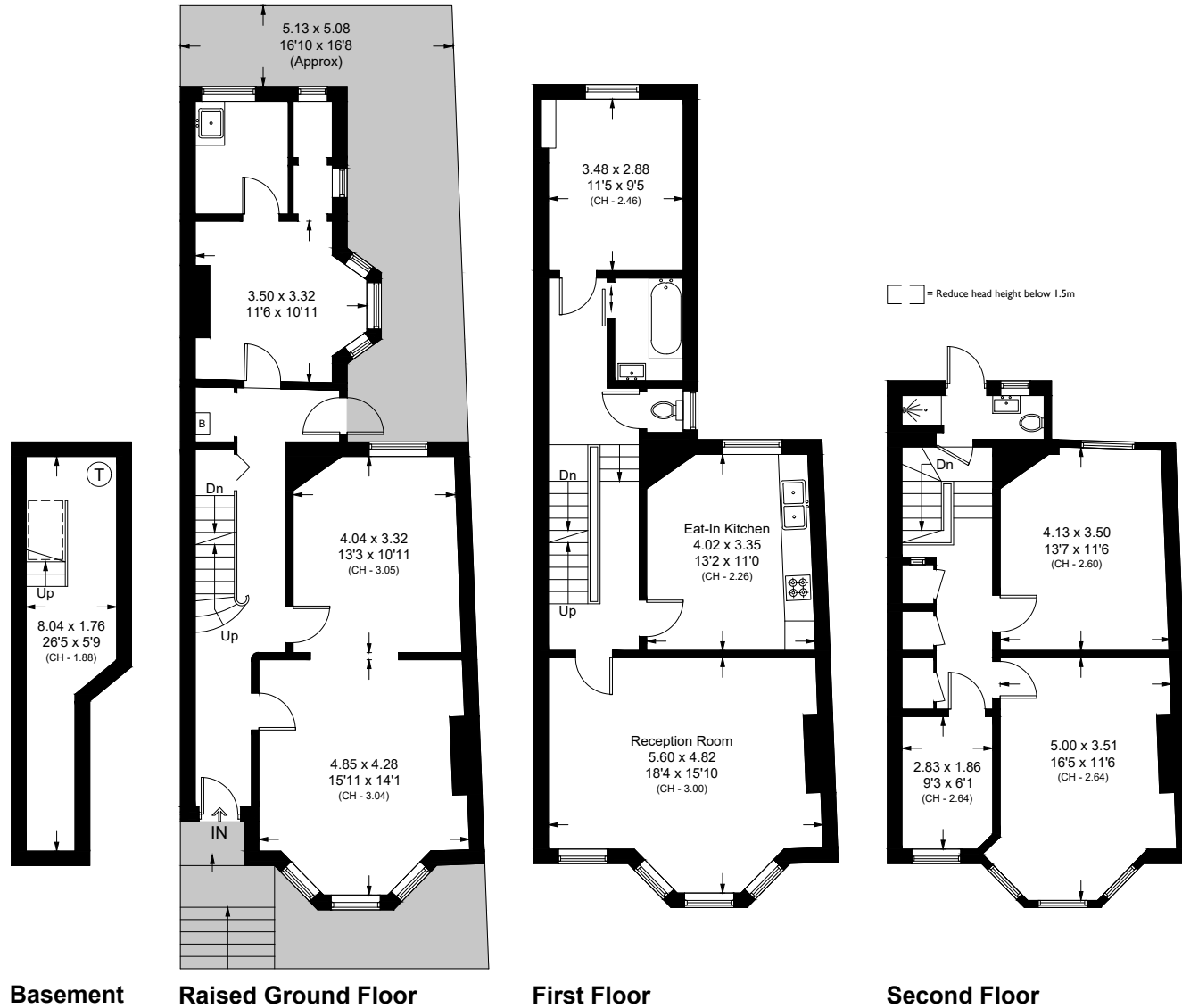
# Gascony Avenue, NW6

Approximate Area = 187.0 sq m / 2019 sq ft

Basement = 12.0 sq m / 124 sq ft

Total = 199.0 sq m / 2143 sq ft

Including Limited Use Area (2.5 sq m / 27 sq ft)



Surveyed and drawn in accordance with the International property measurements standards (IPMS 2: Residential) Not drawn to scale unless stated. Whilst every care is taken in the preparation of this plan, please check all dimensions, shapes and compass bearings before making any decisions reliant upon them.