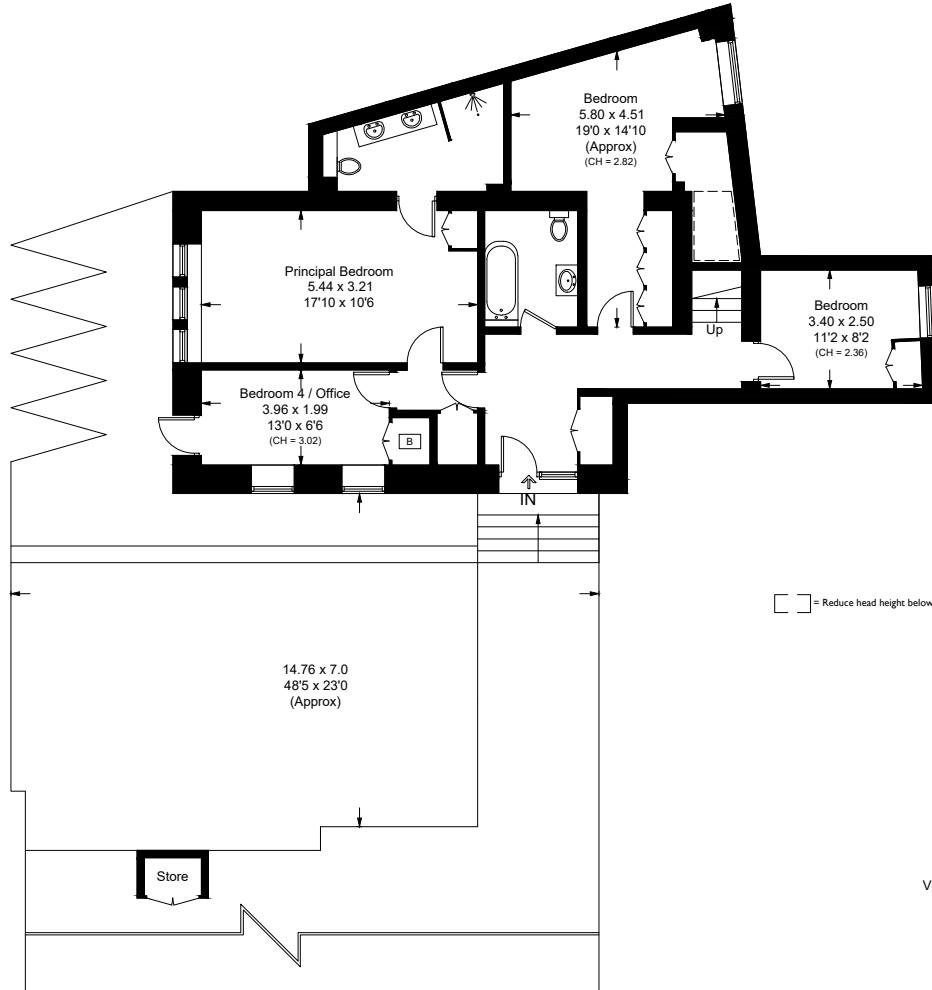
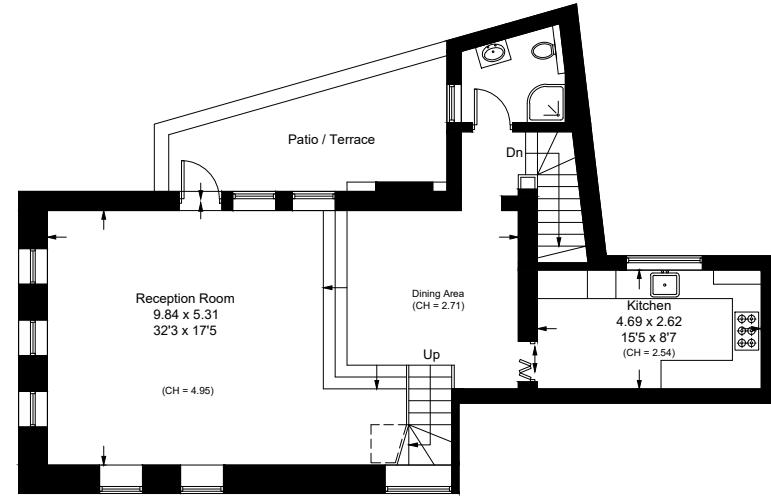


Trinity Close, NW3

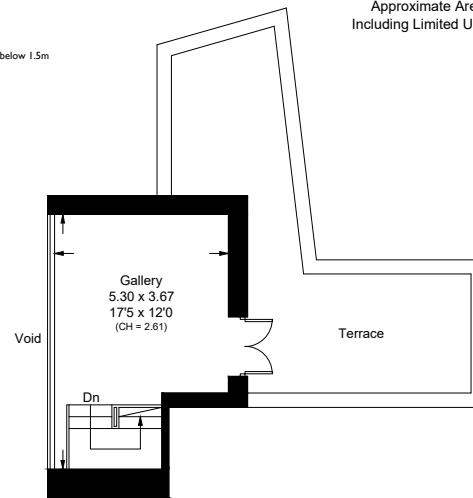
Approximate Area = 183.9 sq m / 1979 sq ft
 Including Limited Use Area (4.4 sq m / 47 sq ft)
 External Store = 1.0 sq m / 11 sq ft
 Total = 184.9 sq m / 1990 sq ft



Ground Floor
 Approximate Area = 91.0 sq m / 979 sq ft
 Including Limited Use Area (3.0 sq m / 32 sq ft)



First Floor
 Approximate Area = 74.8 sq m / 805 sq ft
 Including Limited Use Area (1.4 sq m / 15 sq ft)



Second Floor
 Approximate Area = 18.1 sq m / 195 sq ft

Surveyed and drawn in accordance with the International property measurements standards (IPMS 2: Residential) Not drawn to scale unless stated.
 Whilst every care is taken in the preparation of this plan, please check all dimensions, shapes and compass bearings before making any decisions reliant upon them.