

Canfield Gardens, NW6

Approximate Area = 434.3 sq m / 4675 sq ft

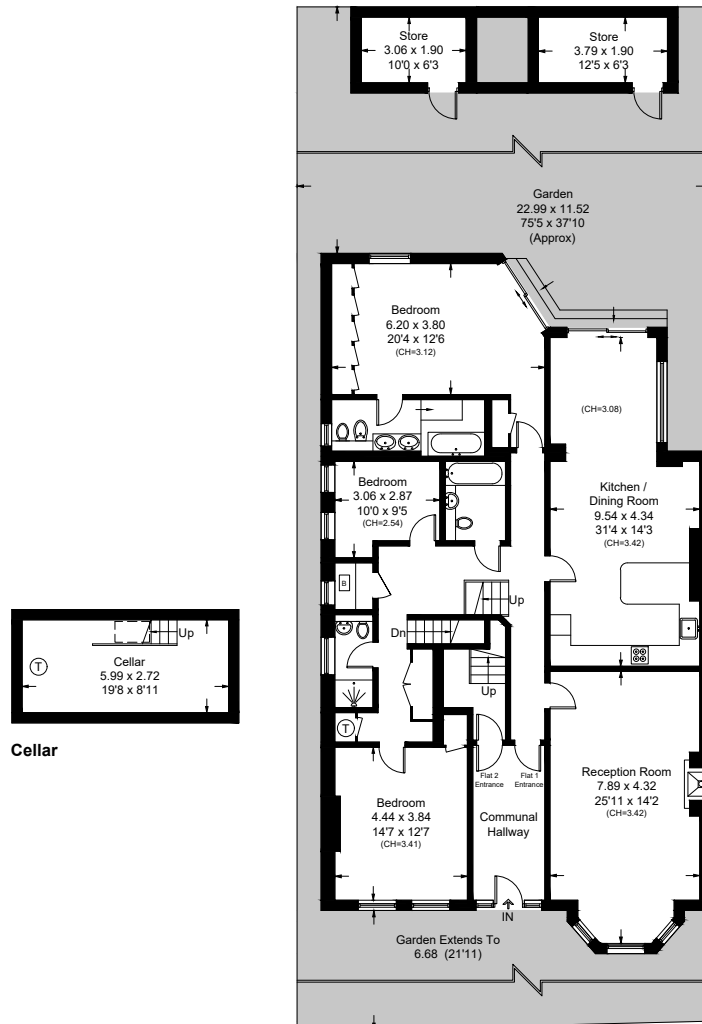
Cellar = 16.2 sq m / 174 sq ft

Loft = 129.5 sq m / 1394 sq ft

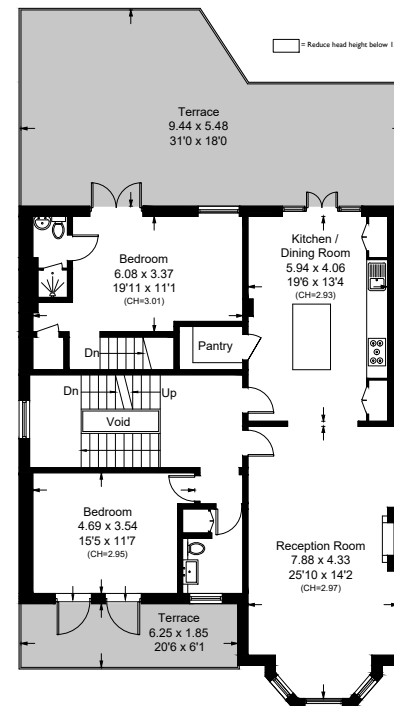
Stores = 13.2 sq m / 142 sq ft

Total = 593.2 sq m / 6385 sq ft

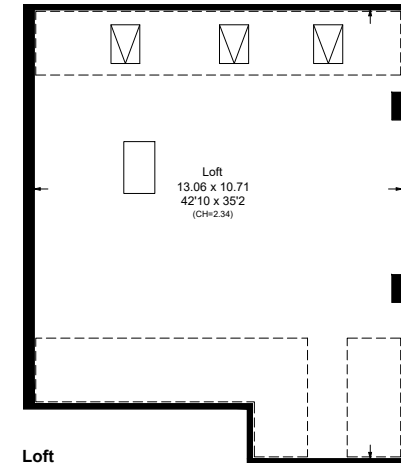
Including Limited Use Area (45.1 sq m / 485 sq ft)



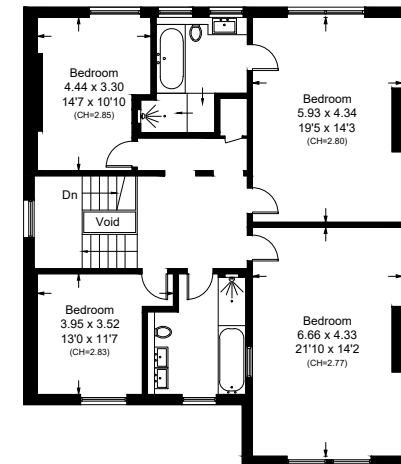
Ground Floor



First Floor



Loft



Second Floor

Surveyed and drawn in accordance with the International property measurements standards (IPMS 2: Residential) Not drawn to scale unless stated. Whilst every care is taken in the preparation of this plan, please check all dimensions, shapes and compass bearings before making any decisions reliant upon them.