



RESIDENTIAL SALES & ACQUISITIONS

MOUNTVIEW CLOSE
HAMPSTEAD GARDEN SUBURB
NW11

A rare opportunity to purchase this deceptively spacious, 3135 sq ft (291 sq mt) five bedroom semi-detached town house, offering bright accommodation arranged over four floors, but with the primary areas over three.

The property is found in good condition throughout and benefits from off street parking for two cars, an integral garage and a secluded, larger than average rear and side garden.

Located at the Northern end of this highly sought after award-winning secure gated development built by renowned developers Octagon. The development is conveniently located adjacent to Golders Hill Park and the Heath Extension and is within easy reach of both cosmopolitan Hampstead Village and the extensive shops, cafes and transport links at Golders Green.



ACCOMMODATION & AMENITIES

Large Entrance Hall • Guest WC • Study • Utility Room • Kitchen/Dining Room • Garden/Family Room • First Floor Reception Room • Master Bedroom with a very Large En-suite Bath/Shower Room • Bedroom Two with En-suite Three Further Bedrooms • Family Bathroom • Off Street Parking for Two Cars • Integral Garage • Patio • Garden • Extensive Storage Room/Potential Fourth Bathroom • Boiler Room • Secure Gated Development • 24 Hour Security/Porterage • Communal Grounds and Gymnasium









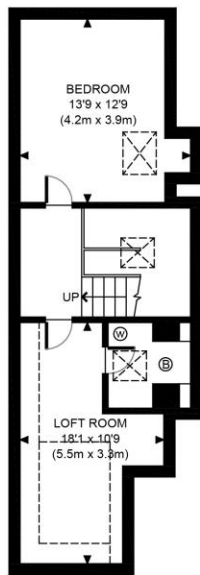
TERMS

TENURE

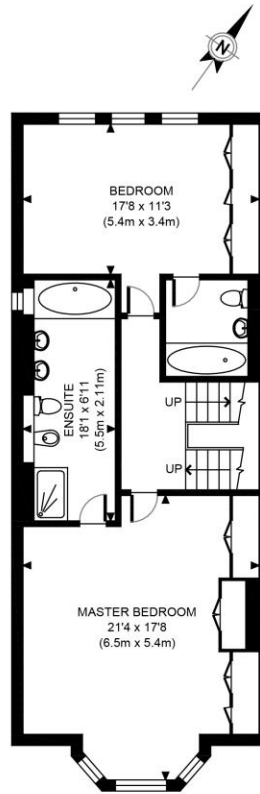
Freehold

GUIDE PRICE

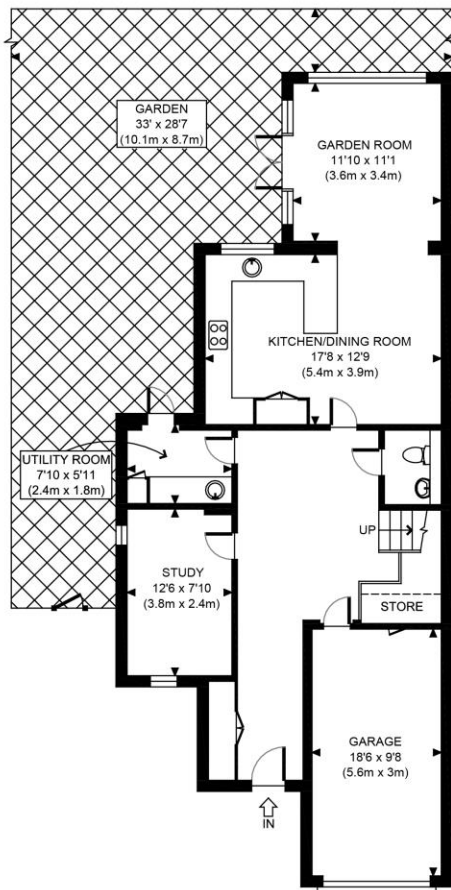
£2,695,000 **Subject to Contract**



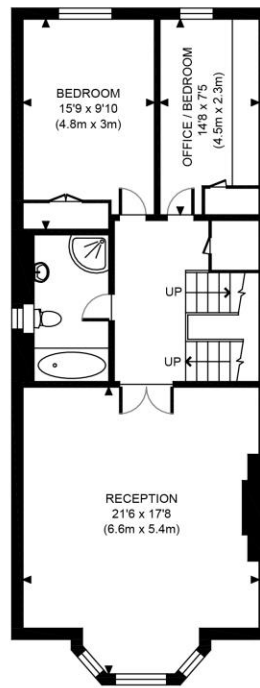
THIRD FLOOR
GROSS INTERNAL
FLOOR AREA 452 SQ FT



SECOND FLOOR
GROSS INTERNAL
FLOOR AREA 834 SQ FT



GROUND FLOOR
GROSS INTERNAL
FLOOR AREA 1016 SQ FT



FIRST FLOOR
GROSS INTERNAL
FLOOR AREA 833 SQ FT

APPROX. GROSS INTERNAL FLOOR AREA WITH GARAGE 3135 SQ FT / 291 SQM

Ref: Copyright **photoplan**
Disclaimer: Floor plan measurements are approximate and are for illustrative purposes only.
While we do not doubt the floor plan accuracy and completeness, you or your advisors should conduct a careful, independent investigation of the property in respect of monetary valuation