



NORTH END
HAMPSTEAD HEATH NW3

NORTH END

HAMPSTEAD HEATH NW3

A RARE AND UNIQUE OPPORTUNITY TO ACQUIRE A BEAUTIFUL GRADE II LISTED FAMILY HOUSE, LOCATED IN A WONDERFUL RURAL SETTING STEPS FROM HAMPSTEAD HEATH.

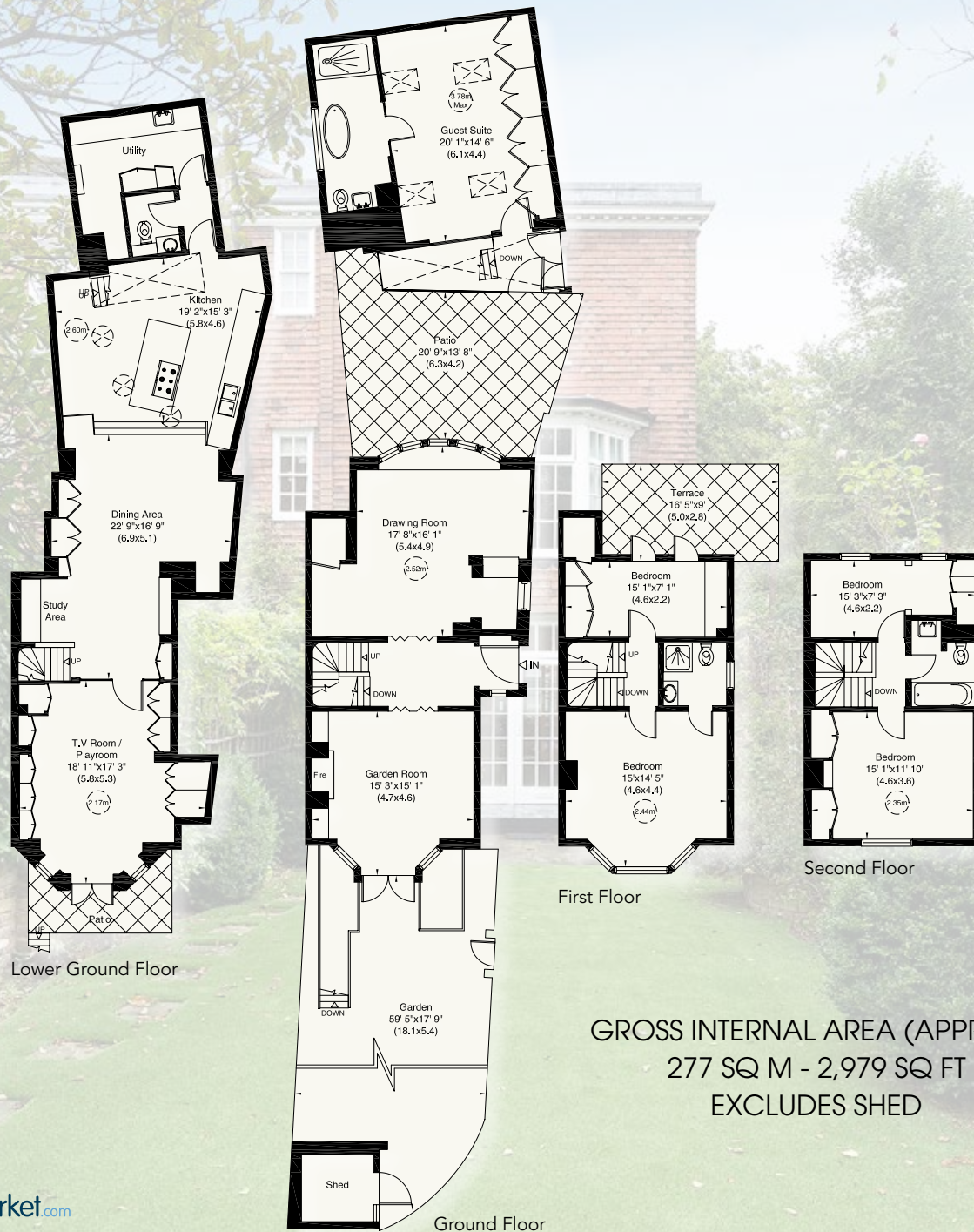


This stunning four/five bedroom house was the former home of William Pitts farm manager, built c1770 and is arranged over four floors. The house has been beautifully refurbished and extended by the current owners to an exacting standard over the last few years and features an incredible kitchen, dining, family area on the lower floors which extends to some 60ft and a wonderful guest suite located within a former detached studio that can be accessed from the main house or its own independent entrance.



The house has wonderful views over North London and part of the Heath from the upper floors and features a bright 60ft South facing garden, a pretty courtyard style patio garden and roof terrace.

ACCOMMODATION & AMENITIES
Entrance hall | Garden room
Drawing room | TV/Playroom | Dining room | Study area | Kitchen/breakfast room | Guest WC | Master bedroom with ensuite shower room | Three further bedrooms | Family bathroom
Separate guest suite bedroom 5/ studio with ensuite bathroom | Roof terrace | Courtyard Patio | 60' walled south facing garden | Resident parking



First Floor

Second Floor

Ground Floor

GROSS INTERNAL AREA (APPROX.)
 277 SQ M - 2,979 SQ FT
 EXCLUDES SHED



TERMS
 Tenure Freehold
 Guide Price Upon Application
 Sole Selling Agent



RESIDENTIAL SALES & ACQUISITIONS

020 7431 0000

28 Church Row, Hampstead, London NW3 6UP
 email: info@marcusparfitt.com www.marcusparfitt.com

Misrepresentation Act 1967. This brochure and the descriptions and measurements herein do not constitute representation and whilst every effort has been made to ensure accuracy, this cannot be guaranteed.

Brochure and Photography by **capital group** 020 8671 5448

