



Hollycroft Avenue

HAMPSTEAD NW3



AN IMPOSING GRADE II LISTED,
EDWARDIAN HOUSE, DESIGNED
BY CHB QUENNEL C1905.

Hollycroft Avenue

HAMPSTEAD NW3

This wonderful family house has been sympathetically refurbished and beautifully maintained throughout and now boasts a contemporary interior of quality and style, providing superb high ceilinged living areas. Featuring five spacious reception rooms, a fantastic kitchen/breakfast/family room with bi-fold doors opening on to the terrace and garden, six bedrooms including an opulent master suite with an extremely large dressing room and en suite bathroom. The house also benefits from having an 80' landscaped rear garden with two covered dining areas and off street parking to the front.



ACCOMMODATION

Entrance Hall • Cloakroom • Drawing Room • Family Room • Dining Room • Study • Luxury Kitchen/Breakfast Room • Garden/TV Room • 2nd Cloakroom • Music Room/Bedroom 6 • Shower Room Master Suite with a large Dressing Room and Bathroom • 5 further Bedrooms • Family Bathroom • 3 Shower Rooms (2 En Suite) • Utility Room • Ample Storage

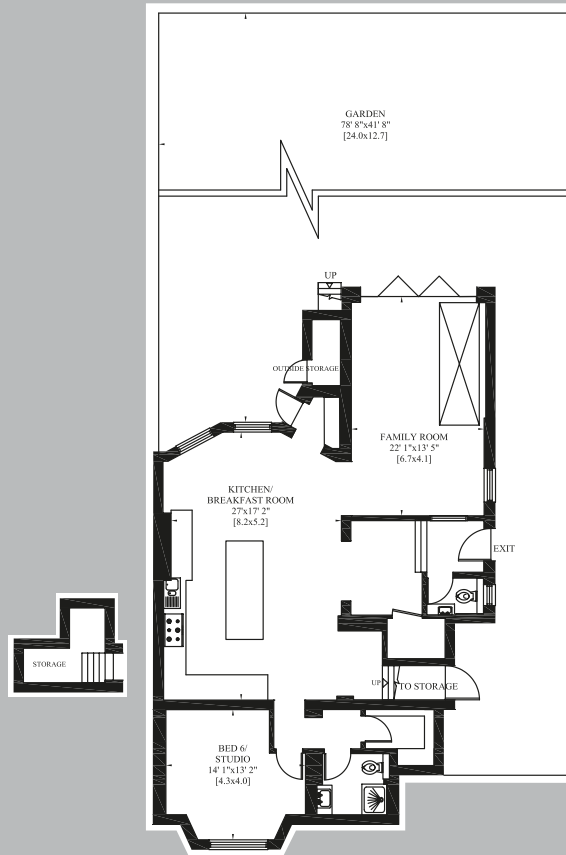
AMENITIES

Large Patio and Terrace • Two Balconies • 80' Lawned Garden with Two Covered Dining Areas • Off Street Parking for 2/3 Cars

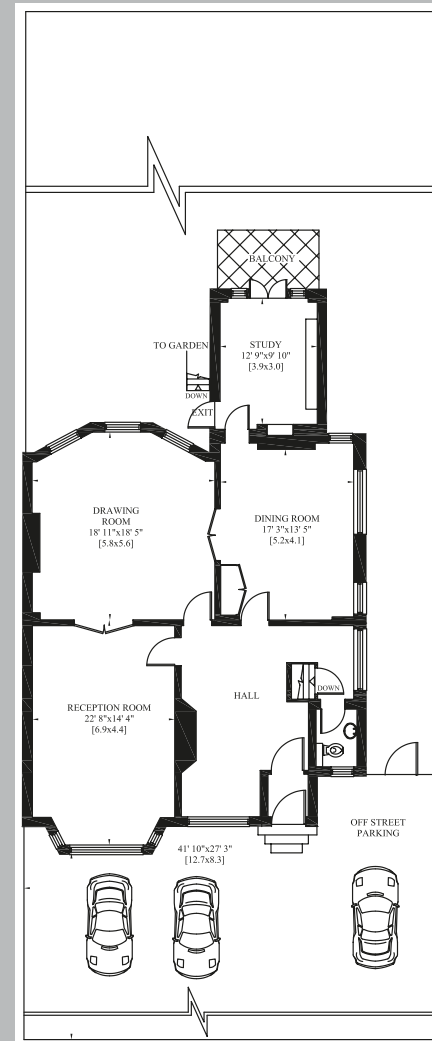




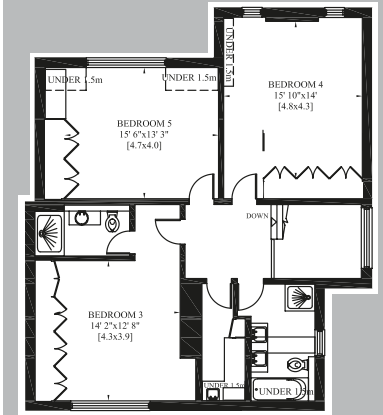
GROSS INTERNAL AREA (INCLUDING UNDER 1.5M HIGH)
466 SQUARE METRES - 5,015 SQUARE FEET



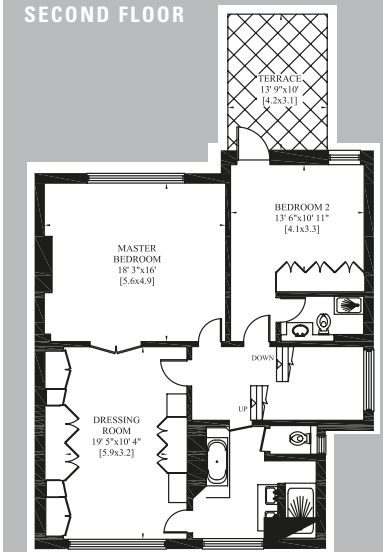
GARDEN FLOOR



RAISED GROUND FLOOR



SECOND FLOOR



FIRST FLOOR

MARCUS
PARFITT

RESIDENTIAL SALES & ACQUISITIONS

020 7431 0000

28 Church Row, Hampstead, London NW3 6UP
email: info@marcusparfitt.com www.marcusparfitt.com

TERMS

TENURE Freehold

SOLE SELLING AGENT

GUIDE PRICE Upon Application
Subject to Contract

Misrepresentation Act 1967. This brochure and the descriptions and measurements herein do not constitute representation and whilst every effort has been made to ensure accuracy, this cannot be guaranteed.