



CHRISTCHURCH HILL,
HAMPSTEAD VILLAGE, NW3



A beautiful double fronted period house conveniently located between Hampstead Heath and The Village. Offered for sale is this beautiful family home still retains many period features having been sympathetically refurbished over recent years.

The house is presented in excellent decorative order with the accommodation arranged over three floors extending to approximately 2,922 square feet (271 sq. sm.).

The terraced gardens are a particular feature and offer wonderful views over the roof tops of the neighbouring houses.

Hampstead underground station (Northern line) vast array of shops, eateries and amenities of the Village are also within walking distance.

GUIDE PRICE £4,250,000

FREEHOLD

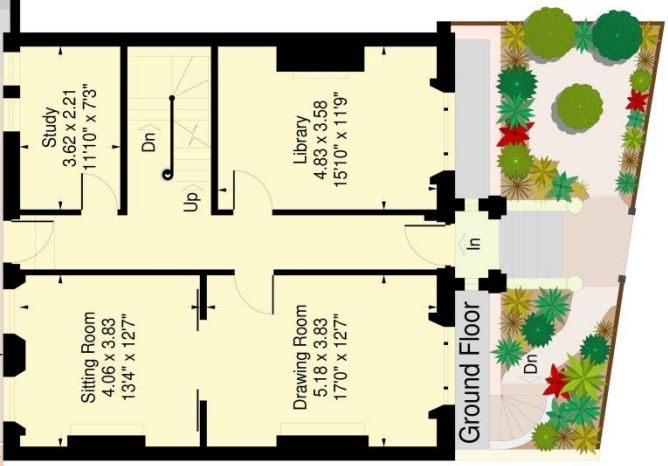


Christchurch Hill, London NW3

Approximate Gross Internal Area:
271.5 sq.mts. / 2922 sq.ft.
(including Vault and Stores)



APPROX. SCALE
0 1 2 3M
0 1 2 3 4 5 10FT



First Floor
Floor Plans produced by
Proplan
01491 842925

This plan is for guidance only and must not be relied upon as a statement of fact. Attention is drawn to the Important Notice on the last page of the Particulars.





