



**REDINGTON ROAD**  
**HAMPSTEAD, NW3**



An exceptional, recently extended and totally refurbished detached family house offering exquisite well proportioned, accommodation. This unique family home is set over 5 floors and offers opulent and well proportioned, accommodation extending to approximately 14,000 sq ft.

The house boasts 6 reception rooms (5 on one floor), a Clive Christian bespoke hand crafted kitchen/breakfast room, 9 seat cinema, a large master suite with a luxurious en suite bathroom with 'his and hers' dressing rooms, 7 further bedrooms, ( 5 of which are suites), staff/guest suite.

Further benefits include a large leisure complex with swimming pool, sauna, and gymnasium and an extremely large terrace with steps down to the mature lawned garden to the rear. The front of the property is a gated driveway providing secure off street parking for numerous vehicles and a double integral garage.

Redington Road is a charming residential street with easy access to the shops, cafes and restaurants of Hampstead, local schools and Hampstead Heath.

**GUIDE PRICE UPON APPLICATION**

**SOLE AGENT**

**FREEHOLD**





















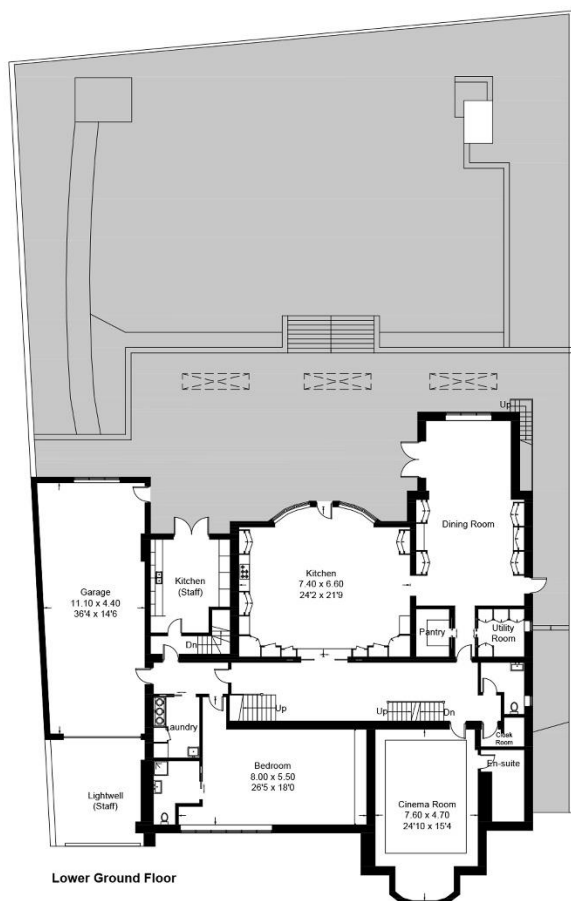
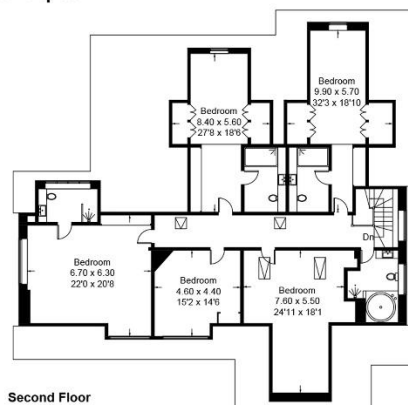
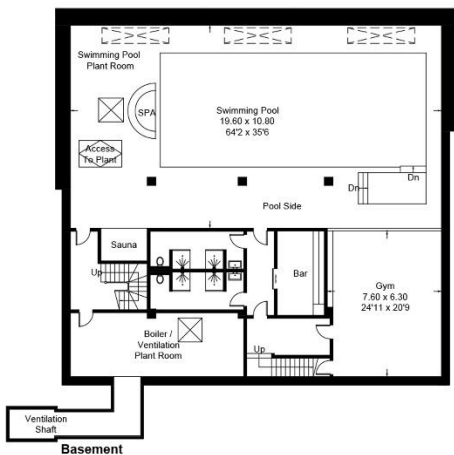


# Redington Road, NW3

Approximate Area = 1032.7 sq m / 11116 sq ft

Basement = 262 sq m / 2820 sq ft

Total = 1294.7 sq m / 13936 sq ft



Surveyed and drawn in accordance with the International property measurements standards (IPMS 2: Residential)  
Not drawn to scale unless stated. Whilst every care is taken in the preparation of this plan,  
please check all dimensions, shapes and compass bearings before making any decisions reliant upon them.