



PENTHOUSE APARTMENT
OTTO SCHIFF HOUSE, NUTLEY TERRACE, NW3



Situated within one of Hampstead's most prominent developments and forming part of a historic building which once housed those seeking refuge and shelter during the Second World War, is this beautifully converted three bedroom duplex penthouse apartment.

Boasting a beautiful contemporary interior design, the accommodation enjoys a wonderful 55'4 x 29' kitchen/living/dining area, three double bedrooms, three bathrooms (two en suite) and a study, together with two private terraces.

This wonderful development also provides a passenger lift, secure underground parking and a daytime porter/caretaker service.

Otto Schiff House is idyllically located on the corner of Nutley Terrace & Netherhall Gardens - a sought after residential area of Hampstead, which is conveniently situated for the amenities and transport links in Hampstead (Northern Line), Finchley Road & Swiss Cottage (Metropolitan & Jubilee Lines) and is also within the catchment of many of the popular schools.

GUIDE PRICE £3,750,000

JOINT SOLE AGENT

SHARE OF FREEHOLD

AMENITIES

**TWO PRIVATE TERRACES, AIR CONDITIONING, UNDER FLOOR HEATING, SECURE UNDERGROUND PARKING
DAYTIME PORTER/CARETAKER, PASSENGER LIFT, MULTIMEDIA TOUCH SCREEN AV CONTROL,
COUNCIL TAX; BAND H, EPC RATING: B83**



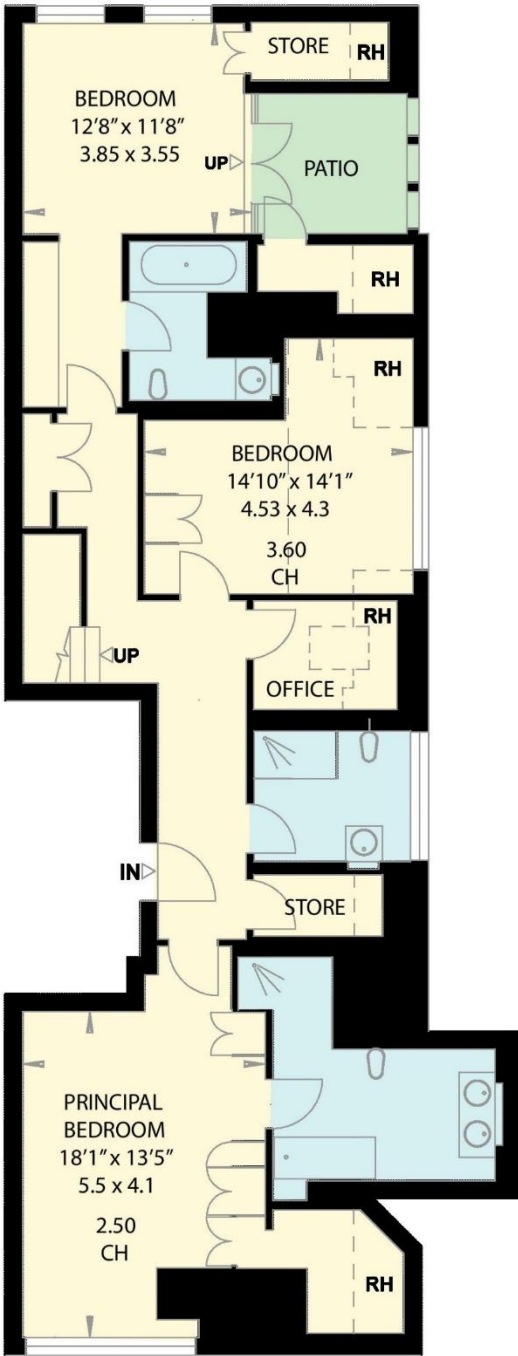




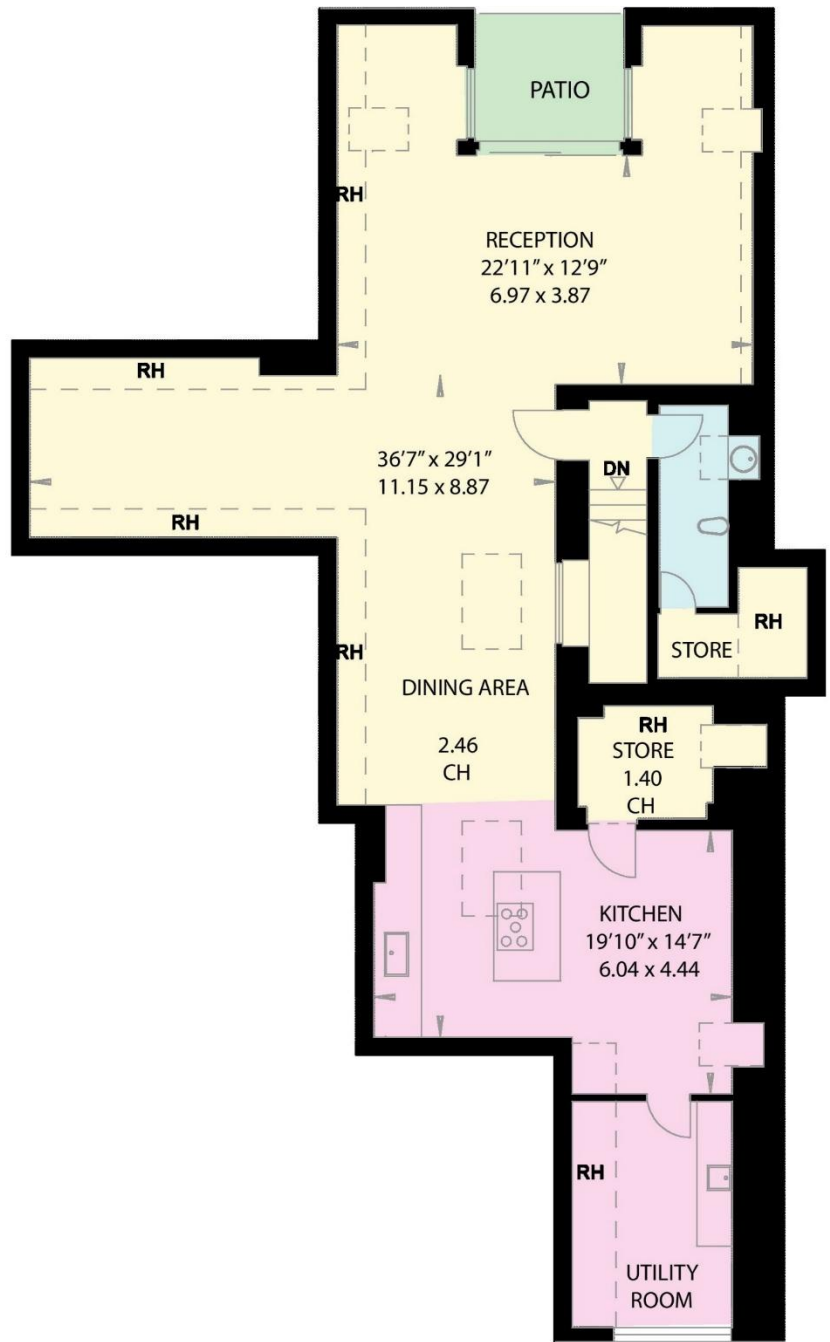
OTTO SCHIFF HOUSE
NUTLEY TERRACE
LONDON NW3

Gross Internal Area = 227.8 sq metres/ 2452 sq feet
(Excluding Restricted Heights)

Gross Internal Area = 260.1 sq metres/ 2800 sq feet
(Including Restricted Heights)



SECOND FLOOR



THIRD FLOOR









