



REDINGTON ROAD, HAMPSTEAD, NW3

MARCUS  
PARFITT

# REDINGTON ROAD

HAMPSTEAD, NW3

---

A unique opportunity to purchase this exceptional family home located in Redington Road, one of Hampstead's finest residential roads.

The house has been meticulously refurbished and has fantastic lateral space arranged across three floors. On the ground floor there is a striking entrance hall with original wooden panelling, an imposing dining room, a double reception room which leads to a snug and a brilliant home office. In addition there is a beautifully appointed kitchen/breakfast room, a playroom and a utility plus WC.

On the first floor there are six double bedrooms, three of which are en-suite and one which has a dressing room plus a family bathroom. Across the second floor is an outstanding principal suite which incorporates a sizeable dressing area, a stunning bathroom and a large balcony.

There is a sizeable garden to the front of the house in addition to a garden at the rear and a garage that is accessed directly from the road. The house benefits from an elevated position and far reaching views.

Guide price: Upon application

Local authority: London Borough of Camden

Freehold







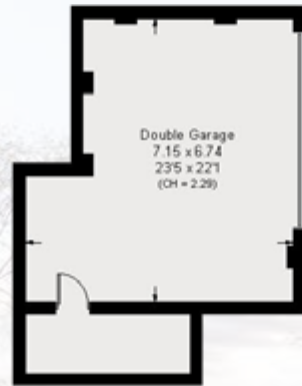




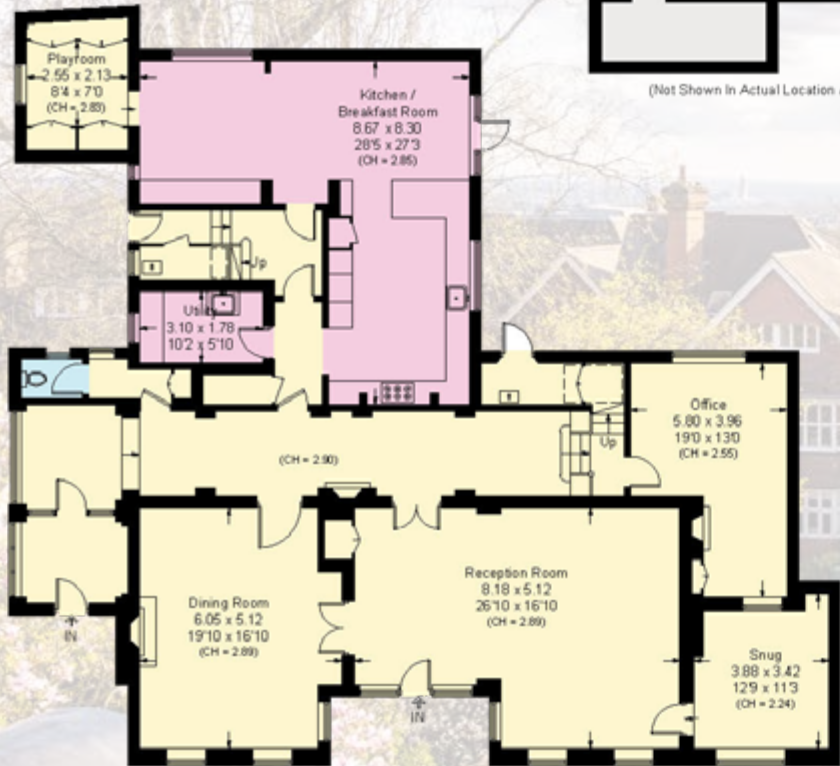


# REDINGTON ROAD, NW3

Approximate Area = 590.8 sq m / 6,359 sq ft  
(Excluding Void)

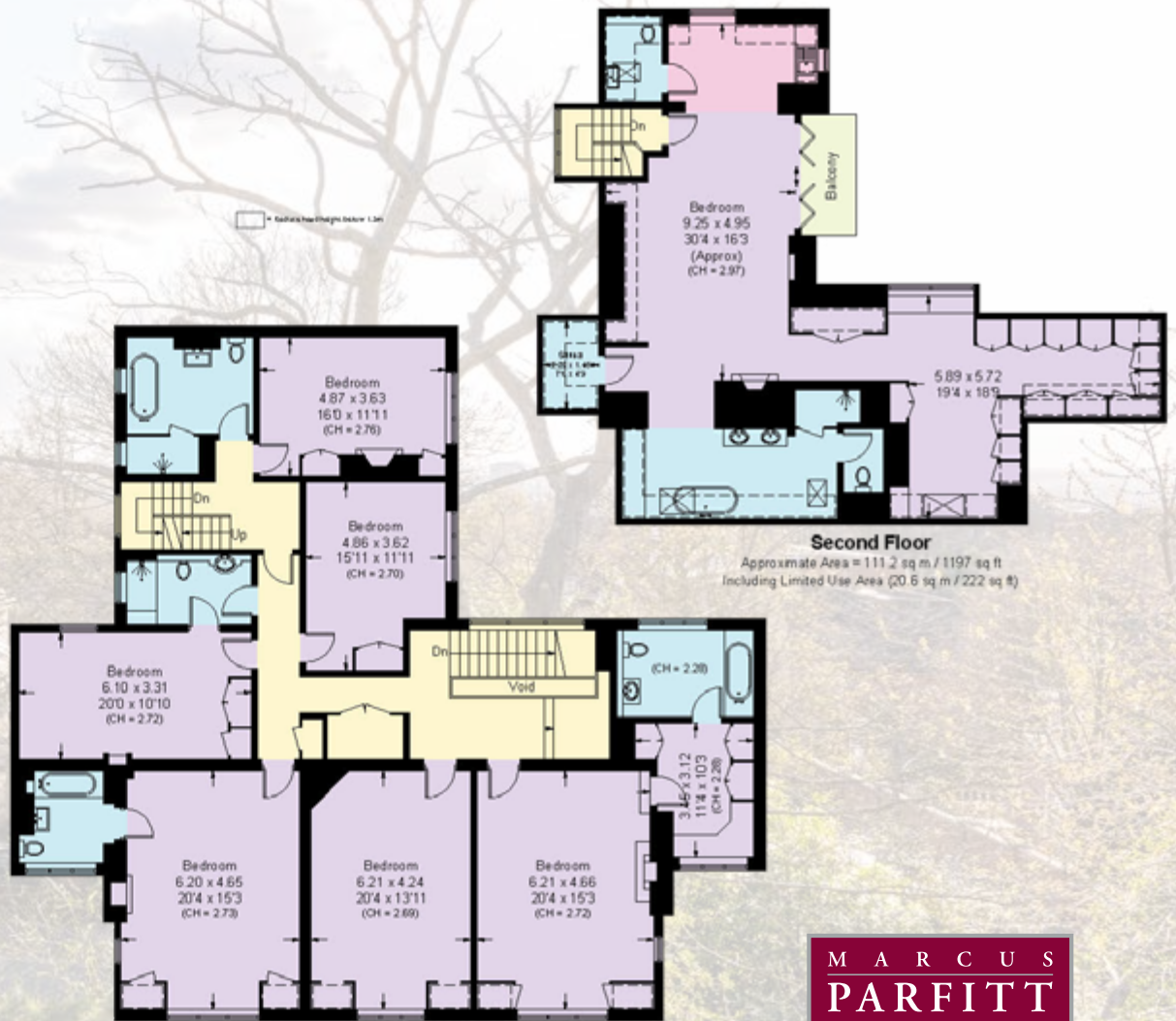


(Not Shown In Actual Location / Orientation)



## Ground Floor

Approximate Area = 246.7 sq m / 2655 sq ft  
Including Limited Use Area (2.5 sq m / 27 sq ft)



## Second Floor

Approximate Area = 111.2 sq m / 1197 sq ft  
Including Limited Use Area (20.6 sq m / 222 sq ft)

## First Floor

Approximate Area = 232.9 sq m / 2507 sq ft (Excluding Void)  
Including Limited Use Area (9.2 sq m / 99 sq ft)



RESIDENTIAL SALES & ACQUISITIONS

**020 7431 0000**

28 Church Row, Hampstead, London NW3 6UP  
email: [info@marcusparfitt.com](mailto:info@marcusparfitt.com) [www.marcusparfitt.com](http://www.marcusparfitt.com)

Surveyed and drawn in accordance with the International property measurements standards (IPMS 2: Residential) Not drawn to scale unless stated. Whilst every care is taken in the preparation of this plan, please check all dimensions, shapes and compass bearings before making any decisions reliant upon them.

