



**LOWER TERRACE**  
**HAMPSTEAD VILLAGE, NW3**



A charming, Grade II listed Georgian home, centrally located within the village on a desirable road that is easily accessible to both the Heath and the High Street.

The accommodation is arranged over three floors only and retains a wealth of period features.

The living space is arranged over the ground floor, with the sitting and dining room opening on to a kitchen/breakfast room, that in turns opens on to a westerly facing rear patio garden.

On the first floor there is a stunning double bedroom with beautiful street views, separate bathroom and a further bedroom that has access to a terrace.

On the lower ground floor there is a double bedroom, a further bathroom, and a utility room.

**ACCOMODATION & AMENITIES**

DRAWING ROOM, DINING ROOM, KITCHEN/BREAKFAST ROOM, THREE BEDROOMS (TWO DOUBLES, ONE LARGE SINGLE), TWO FAMILY BATHROOMS, GUEST W.C., UTILITY ROOM, PRIVATE WESTERLY FACING PATIO GARDEN, FIRST FLOOR WESTERLY FACING TERRACE, RESIDENTS PARKING CA-H

**GUIDE PRICE £2,995,000**

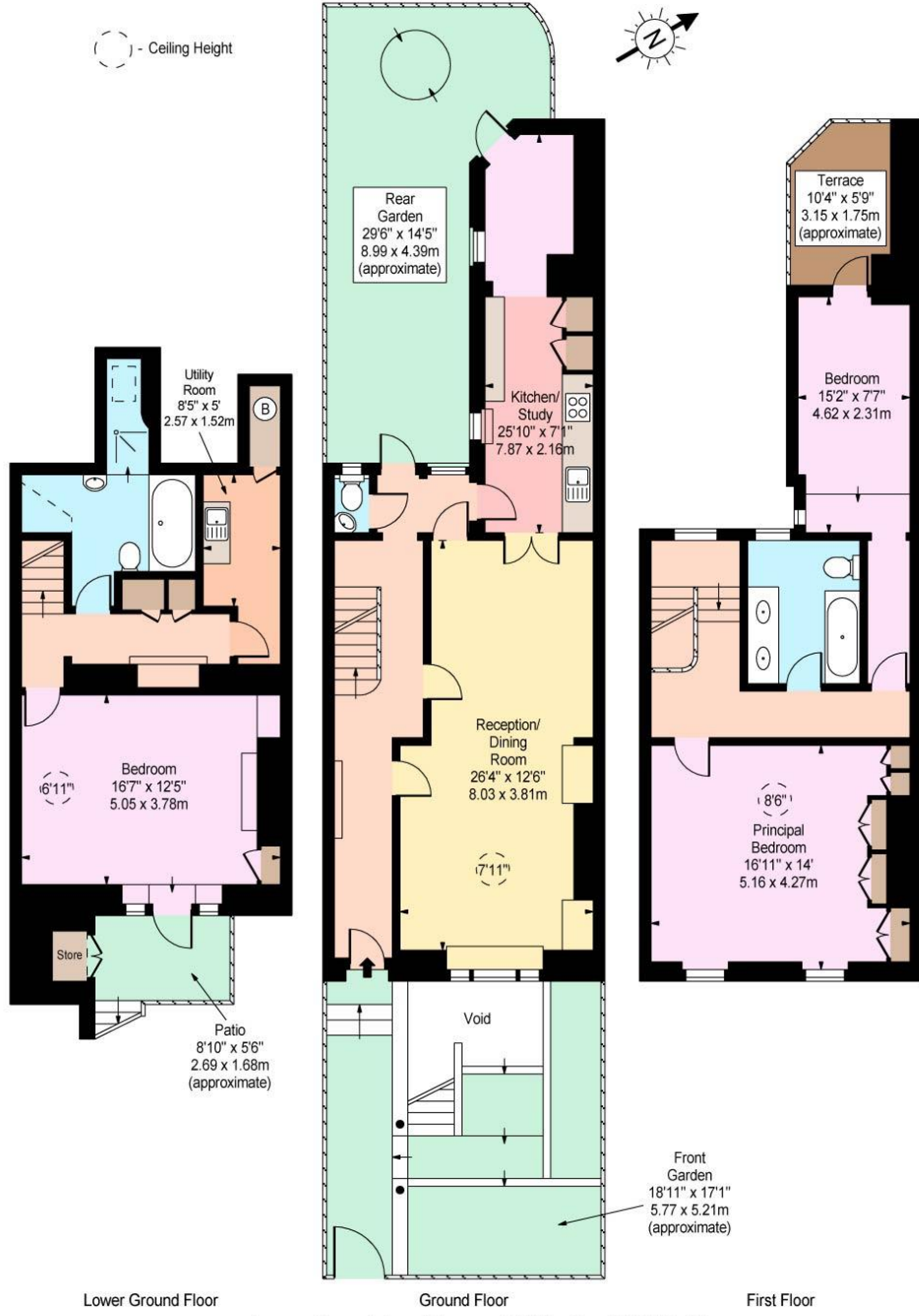
**JOINT SOLE AGENT**

**FREEHOLD**





### Lower Terrace, NW3



Lower Ground Floor

Ground Floor

First Floor

Approx Gross Internal Area **1712 Sq Ft - 159.04 Sq M**  
(Excluding Store)

For Illustration Purposes Only - Not To Scale  
www.goldlens.co.uk  
Ref. No. 013039M





