



PILGRIMS LANE
HAMPSTEAD, NW3



Located on one of Hampstead Village's premier roads, equidistant between the High Street and the undulating acres of Hampstead Heath, a spacious five-bedroom family home predominantly arranged over two floors and extends to approx. 2,534sqft.

This bright home is south east facing in orientation and requires modernisation and with the additional benefit of a self-contained one bedroom flat if required. The spacious hall opens on to the sitting room that is opens onto a further reception space and dining room. There is a downstairs cloak room and fitted kitchen. On the first floor there are three bedrooms and the family bathroom whilst to the second floor is the principal bedroom with en suite bathroom. Accessed via a separate entrance at ground floor level, there is a shower room sitting room, kitchen and a spiral staircase that opens on to the bedrooms with doors then leading to the garden. The garden is south east in orientation and to the front of the house there is off street parking.

ACCOMMODATION & AMENITIES

FULLY FITTED KITCHEN, THREE RECEPTION ROOMS INTERCONNECTING, TV ROOM/SITTING ROOM, SECONDARY KITCHEN/ LAUNDRY, FIVE BEDROOMS, TWO BATHROOMS, ONE SHOWER ROOM PRIVATE GARDEN, OFF STREET PARKING

EPC: E

GUIDE PRICE £3,950,000

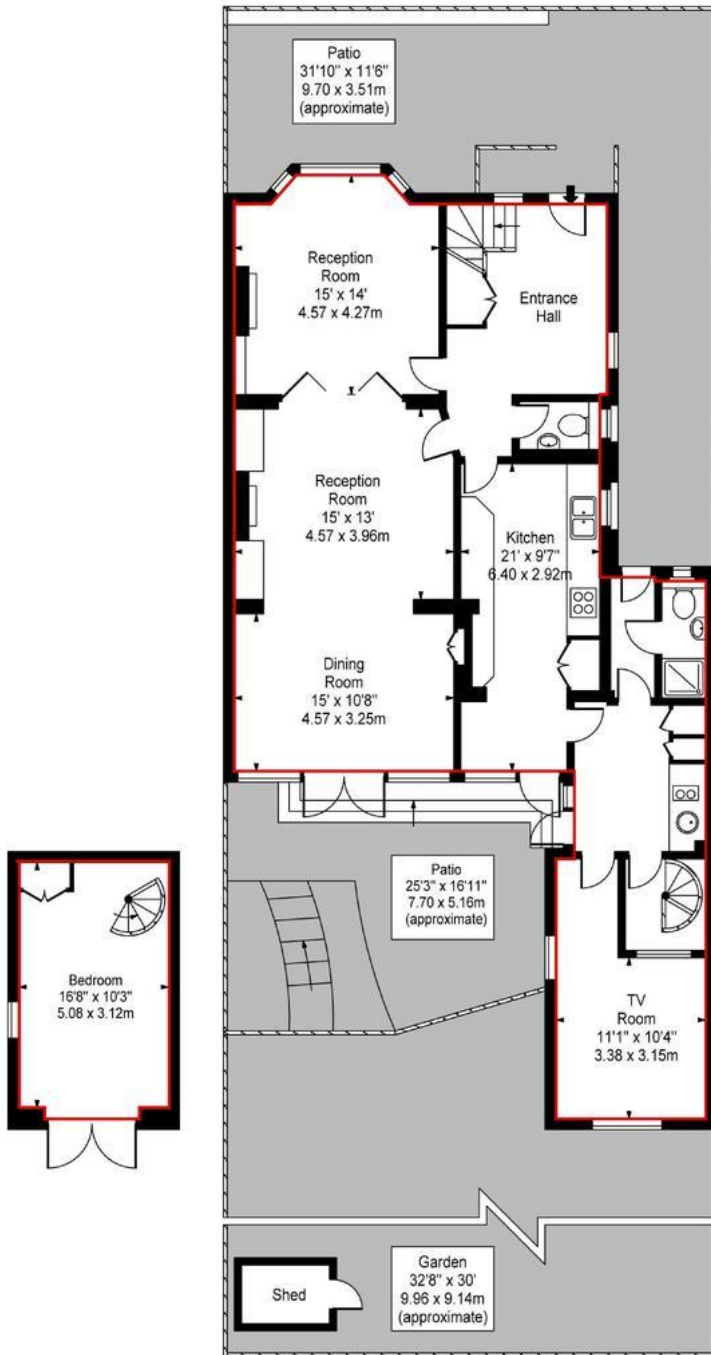
SOLE AGENTS

FREEHOLD



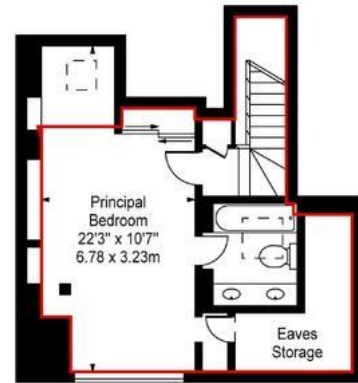


Pilgrims Lane, NW3

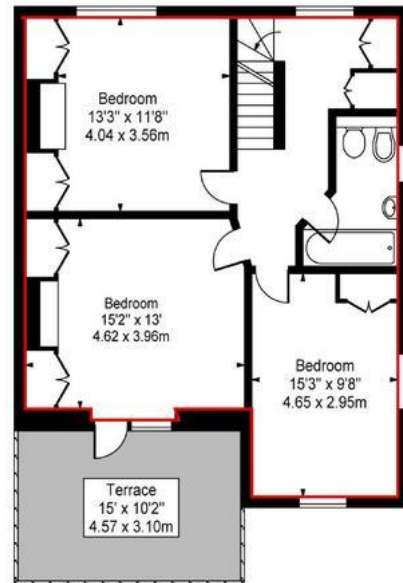


Lower Ground Floor

Ground Floor



Second Floor



First Floor

Approximate Square Footage Within Red Line
Approx Floor Area Including Restricted Heights

2534 Sq Ft - 235.41 Sq M
2634 Sq Ft - 244.70 Sq M

(Excluding Shed)

For Illustration Purposes Only - Not To Scale Floor Plan by www.nogaphotostudio.com Ref: No.27762

This floor plan should be used as a general outline for guidance only. Any intending purchaser or lessee should satisfy themselves by inspection, searches, enquiries and full survey as to the correctness of each statement. Any areas, measurements or distances quoted are approximate and should not be used to value a property or be the basis of any sale or let.