



GOLDERS PARK CLOSE,
GOLDERS HILL PARK, NW11



Situated in a quiet and exclusive cul-de-sac adjacent to Golders Hill Park is this luxury five bedroom modern house, built in 2013, comprising 3390 square feet (314 sq. m)., this gloriously light home is packed with innovative, sustainable features.

Throughout the house there are bespoke finishes in walnut, stainless steel and glass. The kitchen is superbly fitted with Miele appliances and quartz worktops. The luxurious bathrooms have Villeroy & Boch and Deca Purus sanitary ware with advanced digital bath and shower mixers.

The house is ideally situated for public transport and the national road network. Golders Green Underground Station (Northern Line) and Bus Terminus is just 500 metres walk, whilst there is easy road access to Brent Cross Shopping Centre, the A406 North Circular Road, the A41/A1 arterial route and junction 1 of the M1 Motorway.

ACCOMMODATION & AMENITIES

ENTRANCE HALL, RECEPTION ROOM, SITTING ROOM, GUEST WC/COAST CUPBOARD, KITCHEN/BREAKFAST ROOM, HOME CINEMA, FIVE BEDROOMS, THREE WITH ENSUITES, SEPARATE FAMILY BATHROOM, UTILITY ROOM, PLANT ROOM, EXTENSIVE STORAGE, INTERGRATED MUSIC SYSTEM, LUTRON LIGHTING, SECURE GATED OFF STREET PARKING FOR TWO CARS, LANDSCAPED REAR GARDEN AND PATIO

GUIDE PRICE £3,750,000

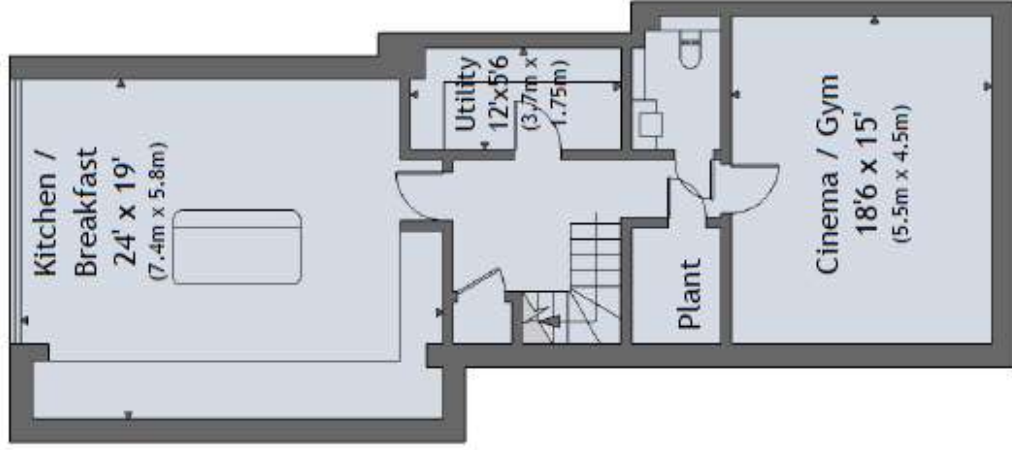
SOLE SELLING AGENT

FREEHOLD

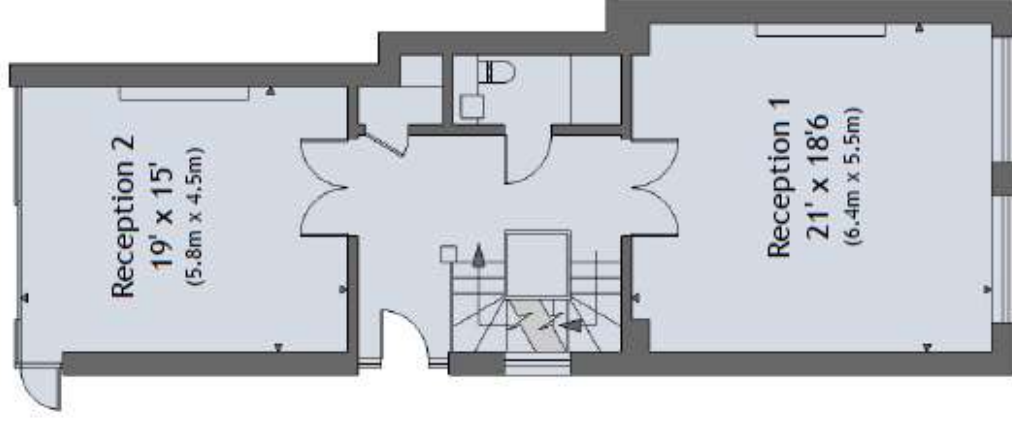


This document is for guidance only and is subject to change without notice. It should not be relied upon and expressly does not form part of any contract.
© Simat Properties Ltd. 2011.

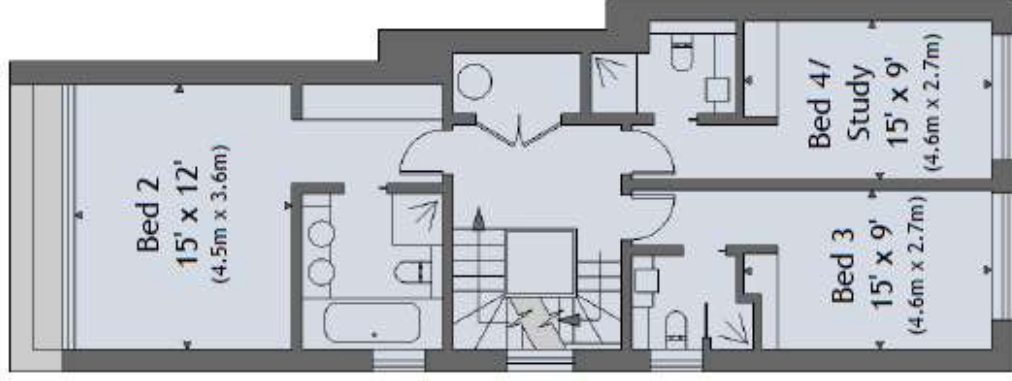
House 1a Floor Plans



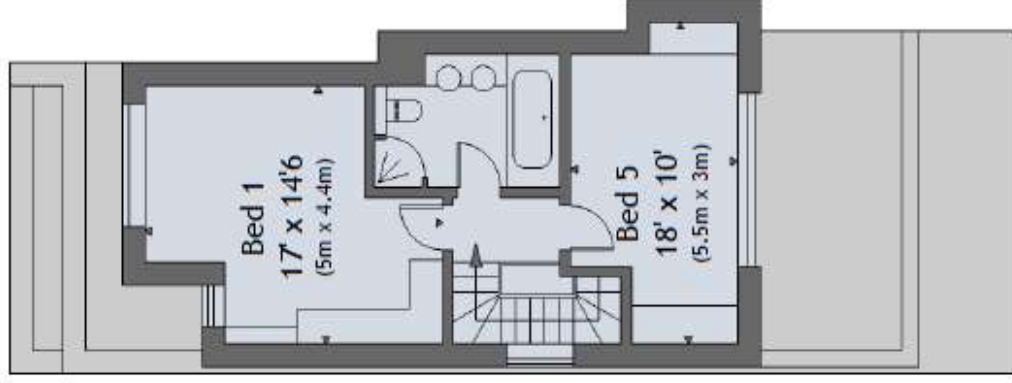
Garden Level



Entrance Level



First



Second

